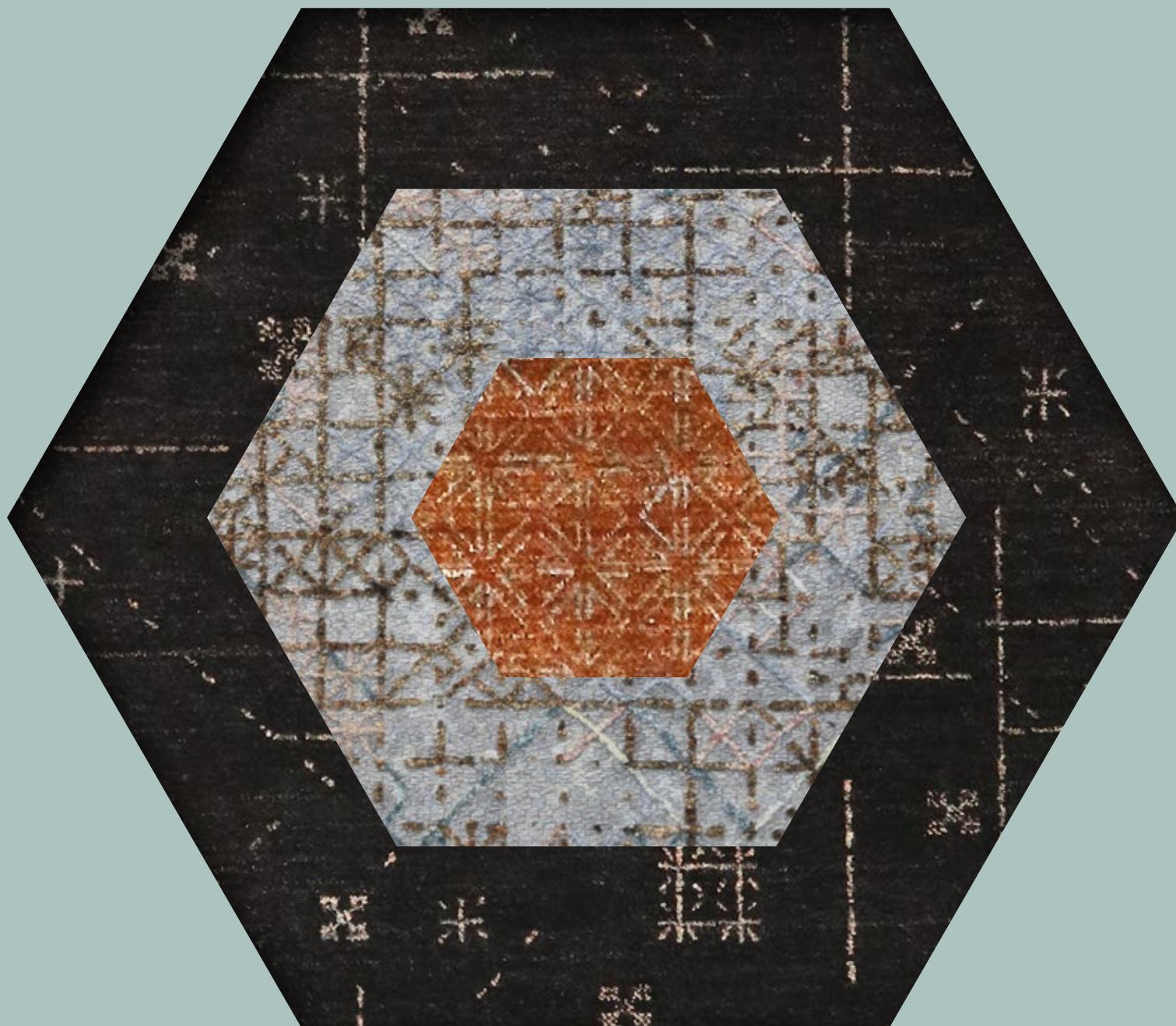




BATTILOSSI

est. 1954

COMPLEX SIMPLICITY — ULTIMATE SOPHISTICATION



CALEIDO CONCEPT NO.1



B A T T I L O S S I

*est. 1959*

# CALEIDO CONCEPT NO.1

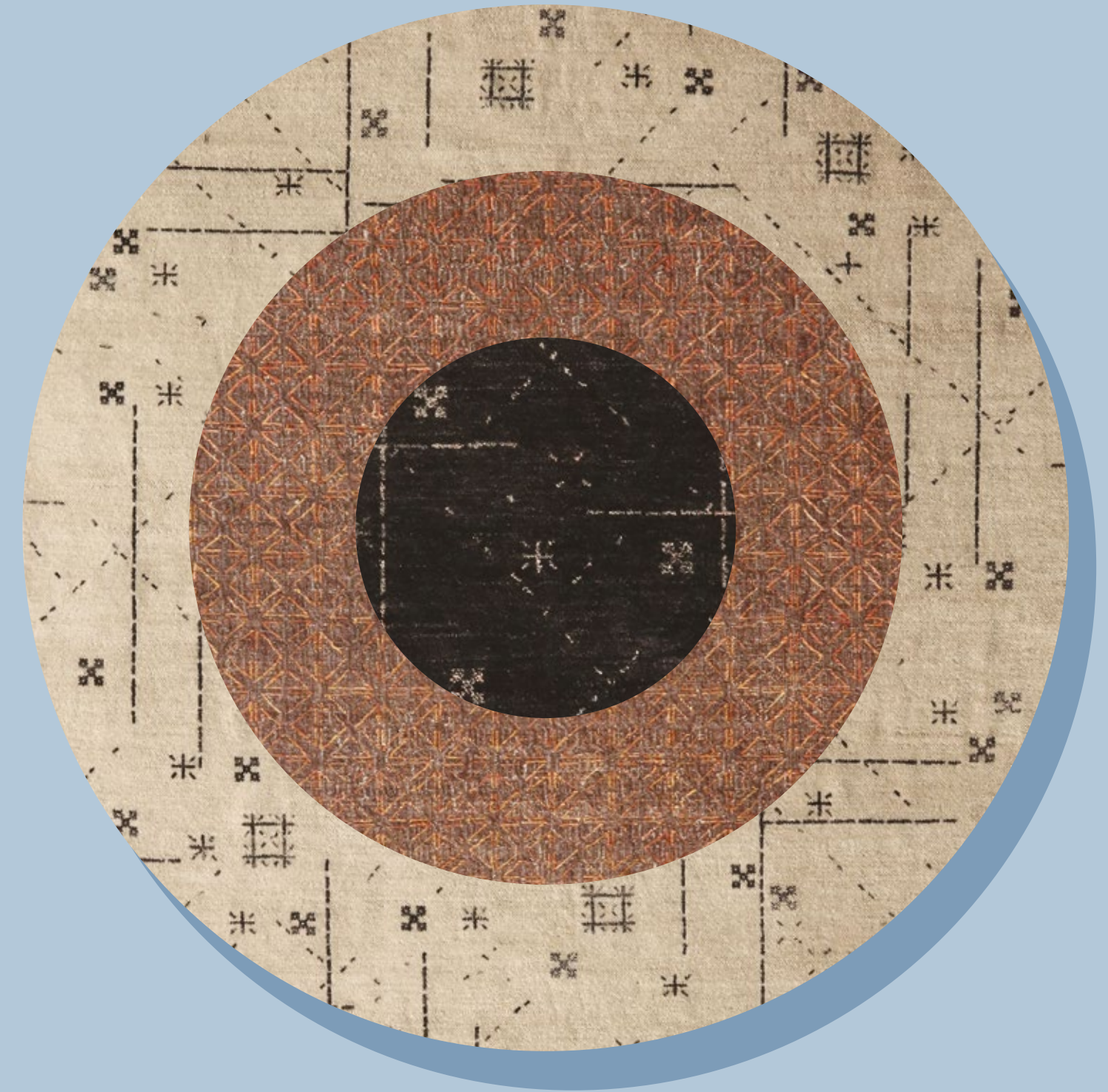
[www.battilossi.com](http://www.battilossi.com)



# Caleido captures the complexity and infinite possibilities of our modular collection.

The name for this concept is derived from the kaleidoscope, the optical instrument familiar from childhood where internal angled mirrors create prismatic reflections. Combining the Ancient Greek words *kalos*, “beautiful, beauty”, and *eidos*, “that which is seen: form, shape”, Caleido captures the complexity and infinite possibilities of our modular collection.

The collection has three key elements: tone, pattern and weaving technique. Like playing with a kaleidoscope, different elements can be assembled, disassembled and reassembled with ease to find the perfect bespoke rug.







Caleido Concept No.1

# WEAVING TECHNIQUES



## TANGO

A bespoke sophisticated flat weave technique where scattered knotted pile is added throughout the weave to create an even richer texture.

The technique is made of a combination of an embroidery "soumak" weaving (typically practised in Azerbaijan, especially in the 18th and 19th century) and a flat woven "kilim" base, together creating a variegated aesthetic and tactile perception.

## IBIZA

Ibiza is the weave technique that interprets a 15th century Spanish knot where knots, instead of being tied in an orthogonal organization, are alternated in a diagonal one. Battilossi's innovative knotting technique creates a surface with a distinct elegant texture look and feel.

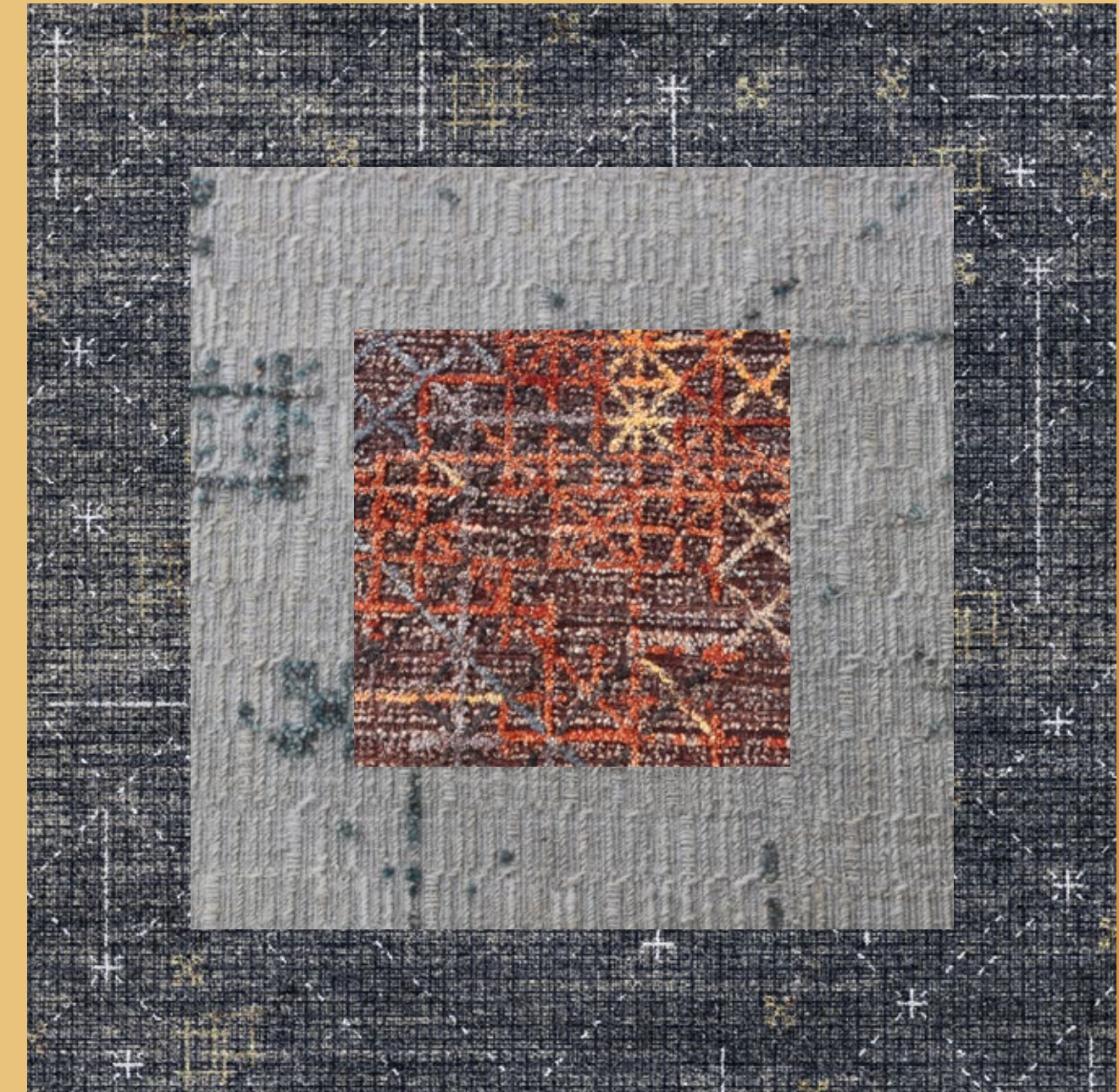
## GAMLA

A quite original and unique mixed technique where a 'Scandinavian' knot-pile feeling meets 'soumak' weaving. This combination creates a lively three-dimensional rug surface.



# Details create design clarity.

The Kaleido Concept collection reflects our focus on how details of weave and texture can enhance pattern and colour to create rugs that express our exclusive and individual yet straightforward approach to sophisticated design.

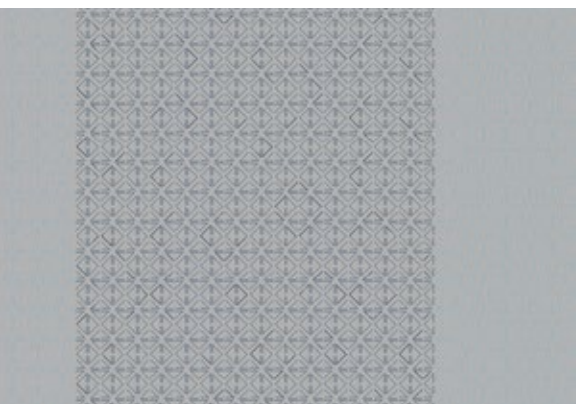
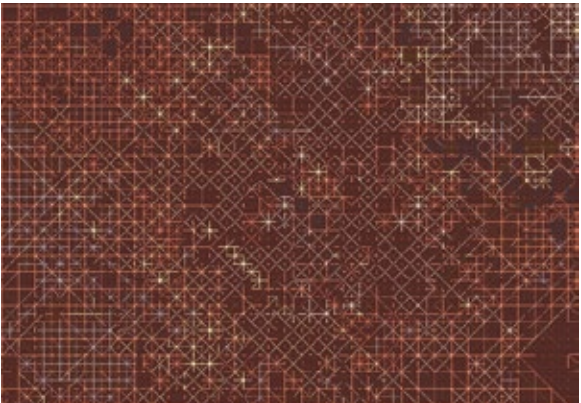
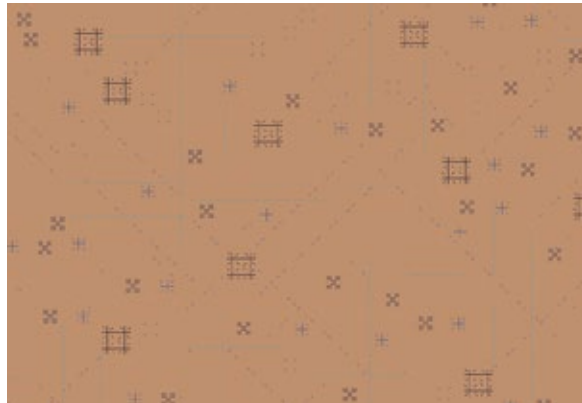






Caleido Concept No.1

# PATTERNS



## FRACTO

A clean, light, delicate design. The pattern is made up of just a few motifs: dots and lines that meet and turn into subtle shapes.

## FROST

In this design, elaborate combinations of motifs result in a richly decorated surface.

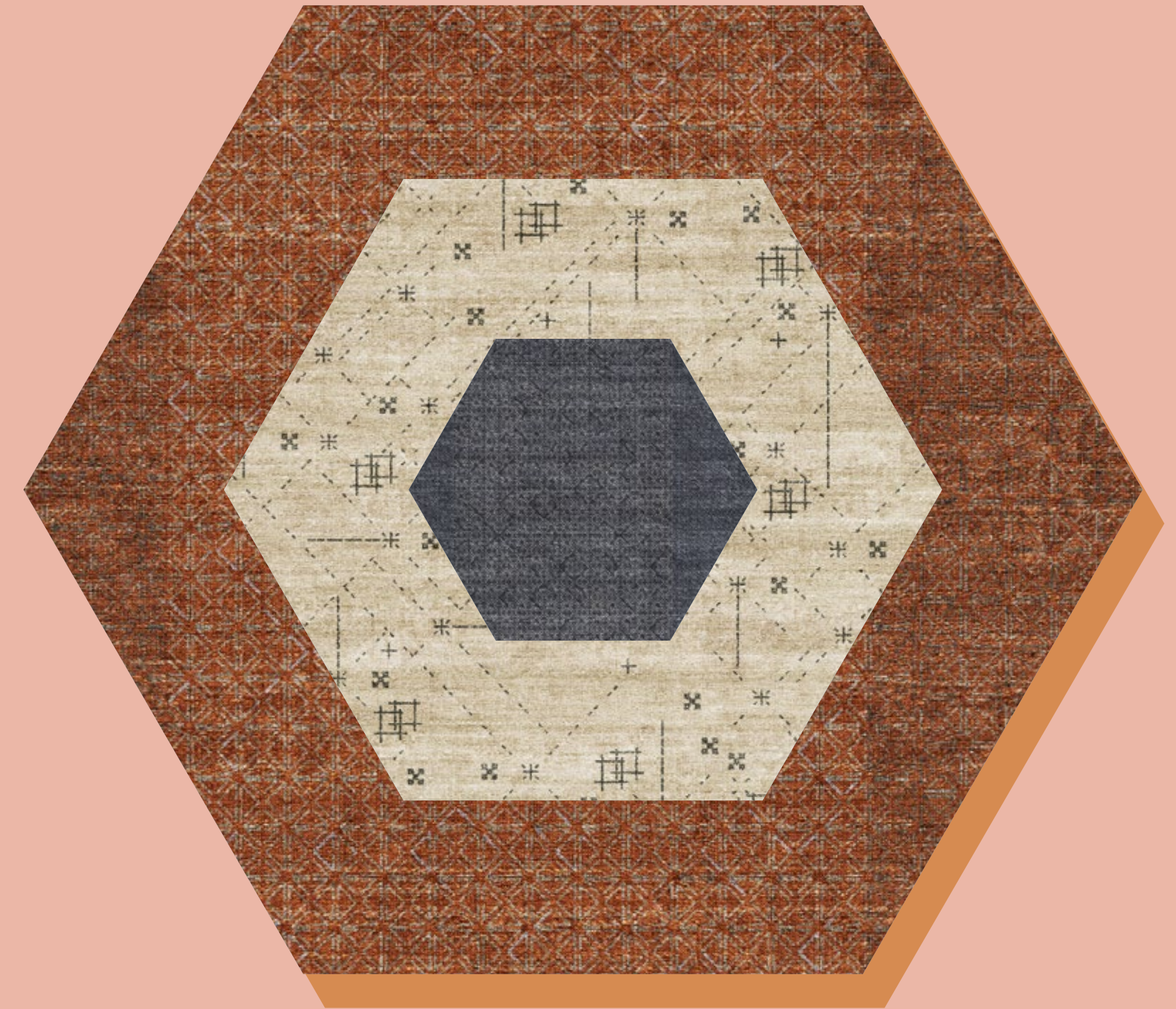
## FUROSA

The pattern of crosses and stars is so dense that it creates an interlocking network across the entire surface. To complete the design, two barely noticeable bands give movement and frame the carpet.



# Shades within the tonal groups can be easily combined with harmonious results.

The colours of the Caleido palette offer infinite combinations, and are divided into three tones: light, medium and dark. Shades within the tonal groups can be easily combined with harmonious results. The tone describes the perception of a carpet as a whole. The intention is always to obtain a bright and brilliant result, even in dark tone carpets. The tones are designed to work seamlessly with our patterns and weaves.





**LIGHT  
TONE**



Fracto in Autumn



Fracto in Chalk



Fracto in Yogurt



Frost in Bermuda



Frost in Raincloud



Frost in Vanilla



Furosa in Chestnut

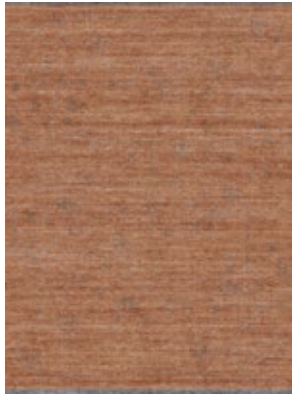


Furosa in Trueblue



Furosa in Venice

**MEDIUM  
TONE**



Fracto in Adobe



Fracto in Cactus



Fracto in Tiffany



Frost in Oysterbay



Frost in Seashell



Frost in Truffle



Furosa in Capri



Furosa in Navy



Furosa in Starburst

**DARK  
TONE**



Fracto in Ink



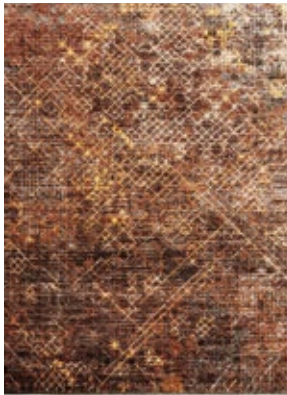
Fracto in Rust



Fracto in Sandstone



Frost in Emerald



Frost in Jazzberry



Frost in Mamba



Furosa in Grape



Furosa in Teal



Furosa in Thunder



Caleido Concept No.1 – TONES

# LIGHT TONES



Fracto in Autumn



Fracto in Chalk



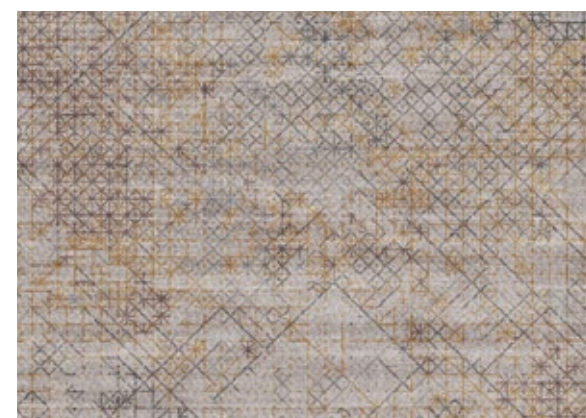
Fracto in Yogurt



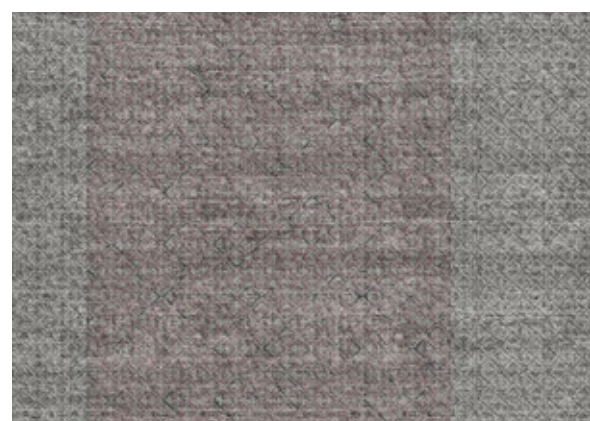
Frost in Bermuda



Frost in Raincloud



Frost in Vanilla



Furosa in Chestnut



Furosa in Trueblue



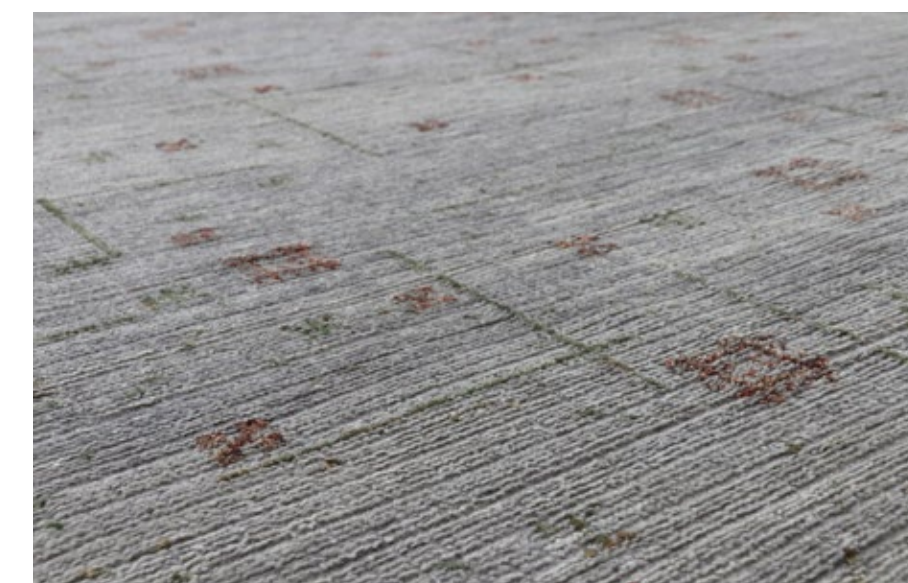
Furosa in Venice

Caleido Concept No.1  
LIGHT TONE

## FRACTO IN AUTUMN



Size 220 x 300 cm



**Design&Colour** Fracto in Autumn

**Weaving Technique** Gamla

**Production** Hand-knotted in 100% Ghazni wool in Lahore, Punjab  
Custom materials, colours and sizes available upon request



Caleido Concept No.1  
LIGHT TONE

FRACTO IN CHALK



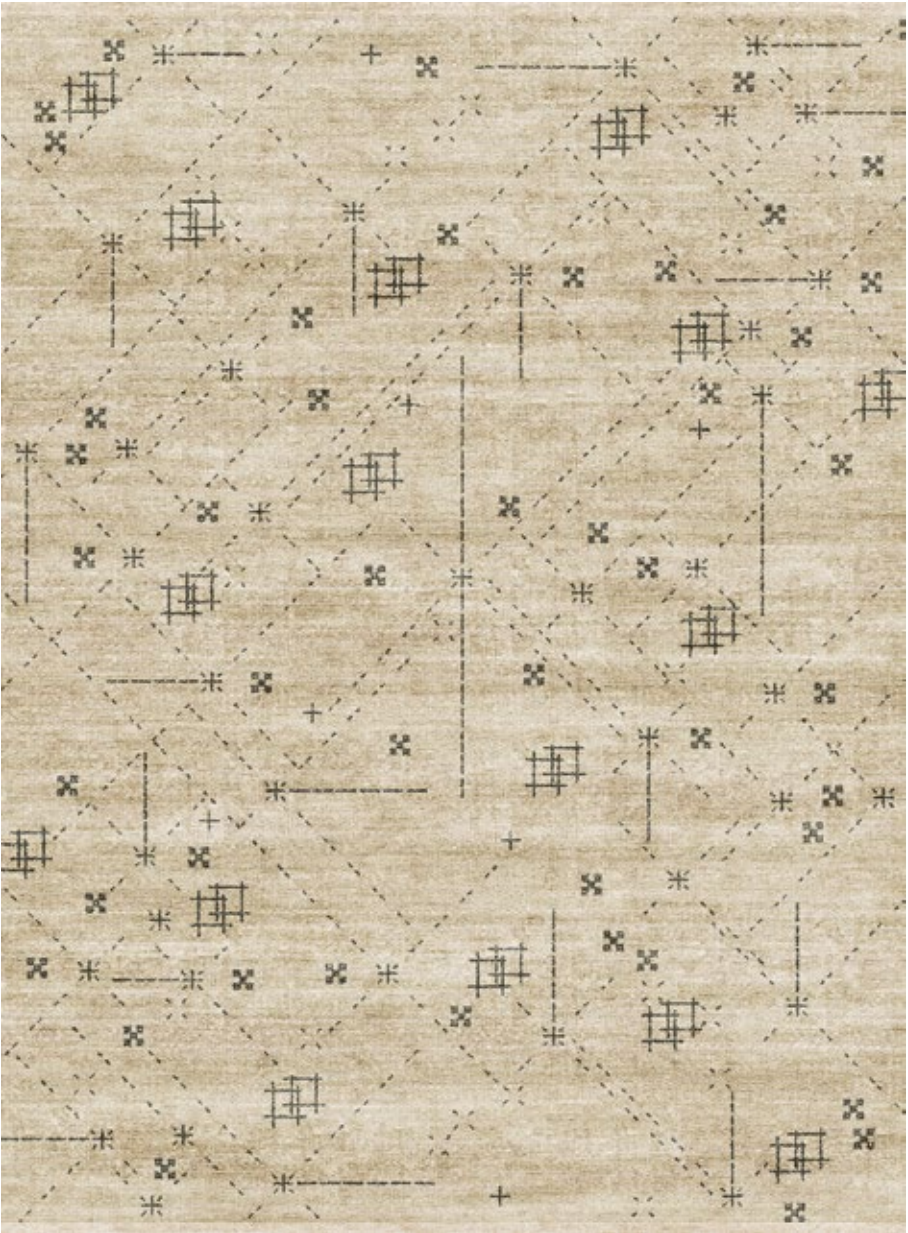
Size 220 x 300 cm



**Design&Colour** Fracto in Chalk  
**Weaving Technique** Tango  
**Production** Hand-knotted in 100% Ghazni wool in Lahore, Punjab  
Custom materials, colours and sizes available upon request

Caleido Concept No.1  
LIGHT TONE

FRACTO IN YOGURT



Size 220 x 300 cm

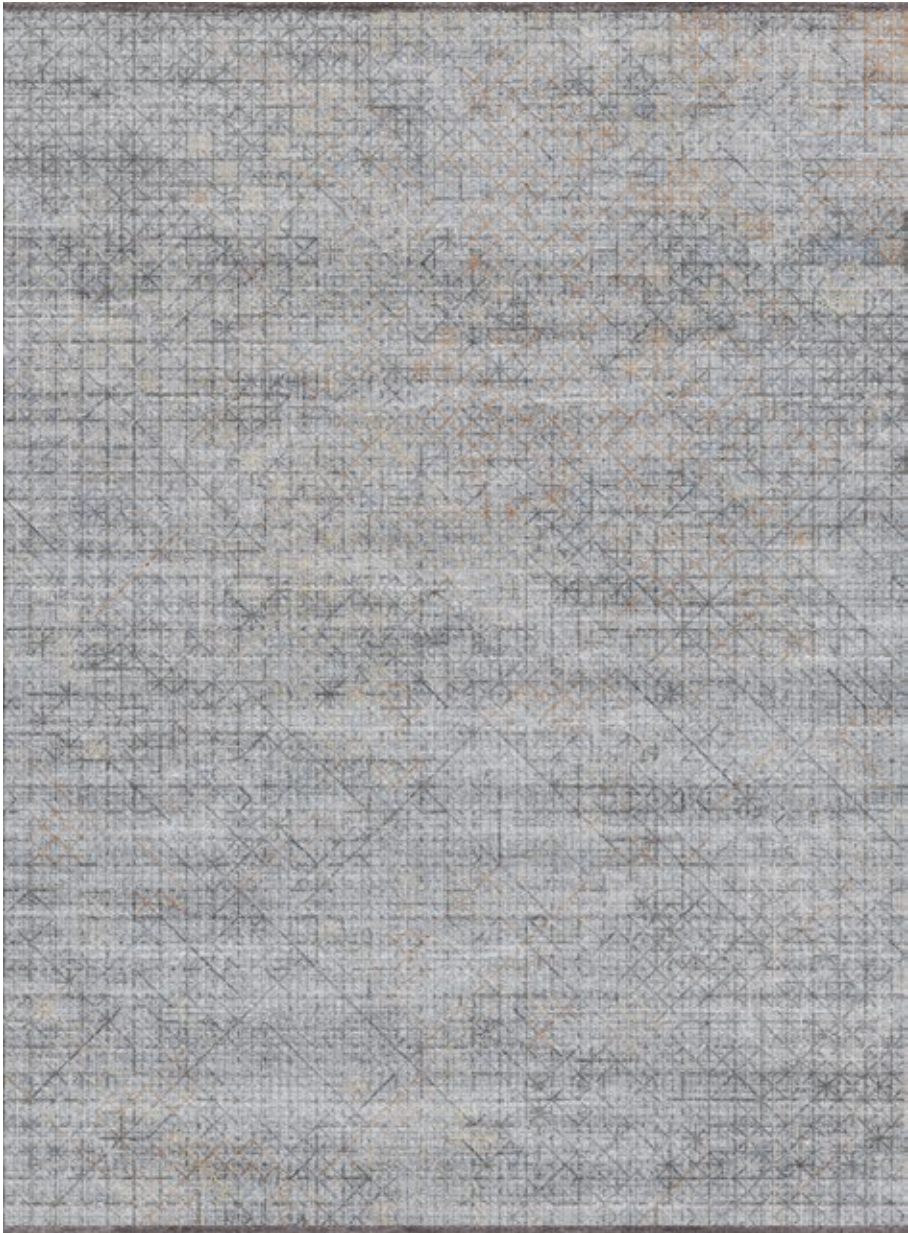


**Design&Colour** Fracto in Yogurt  
**Weaving Technique** Ibiza  
**Production** Hand-knotted in 100% Ghazni wool in Lahore, Punjab  
Custom materials, colours and sizes available upon request



Caleido Concept No.1  
LIGHT TONE

FROST IN BERMUDA



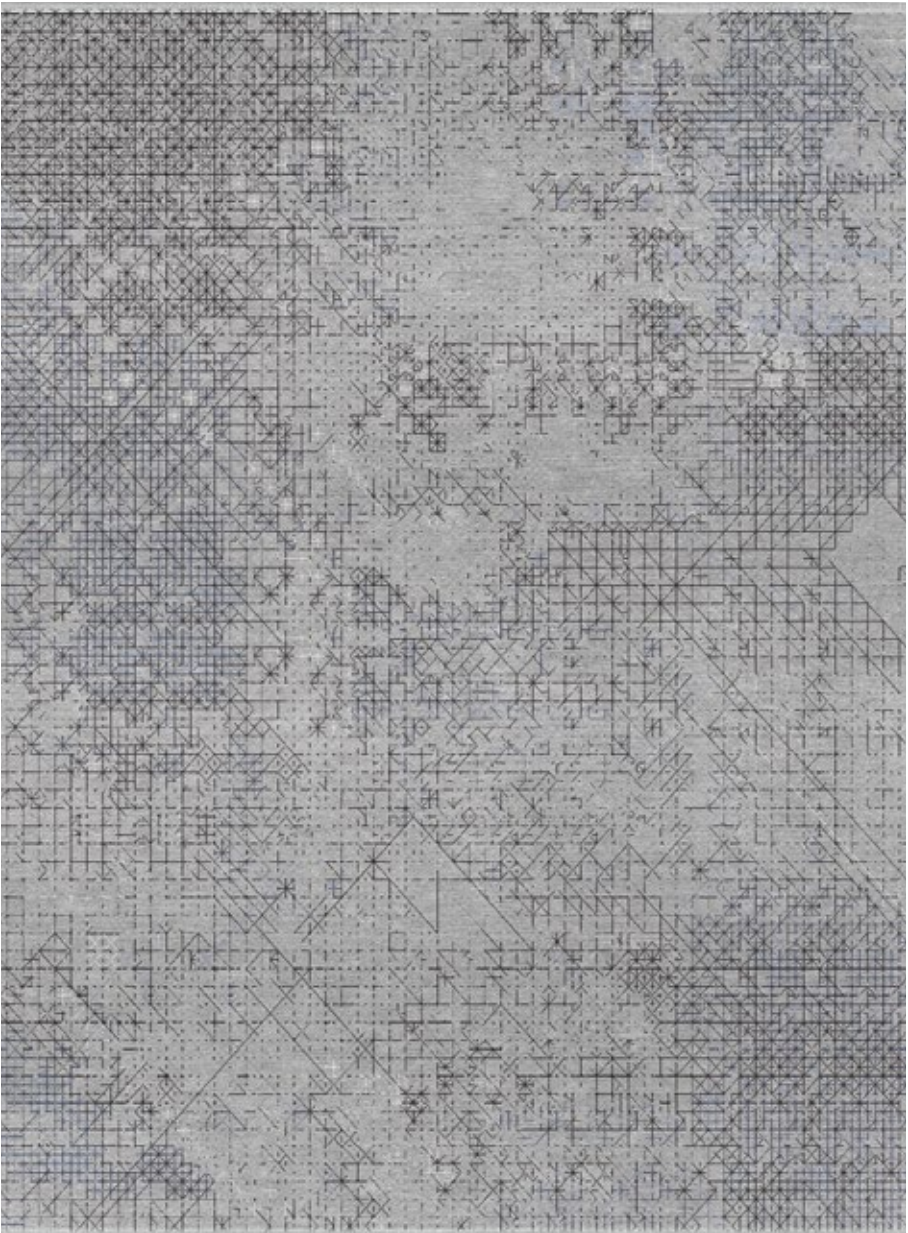
Size 220 x 300 cm



**Design&Colour** Frost in Bermuda  
**Weaving Technique** Gamla  
**Production** Hand-knotted in 100% Ghazni wool in Lahore, Punjab  
Custom materials, colours and sizes available upon request

Caleido Concept No.1  
LIGHT TONE

FROST IN RAINCLOUD



Size 220 x 300 cm

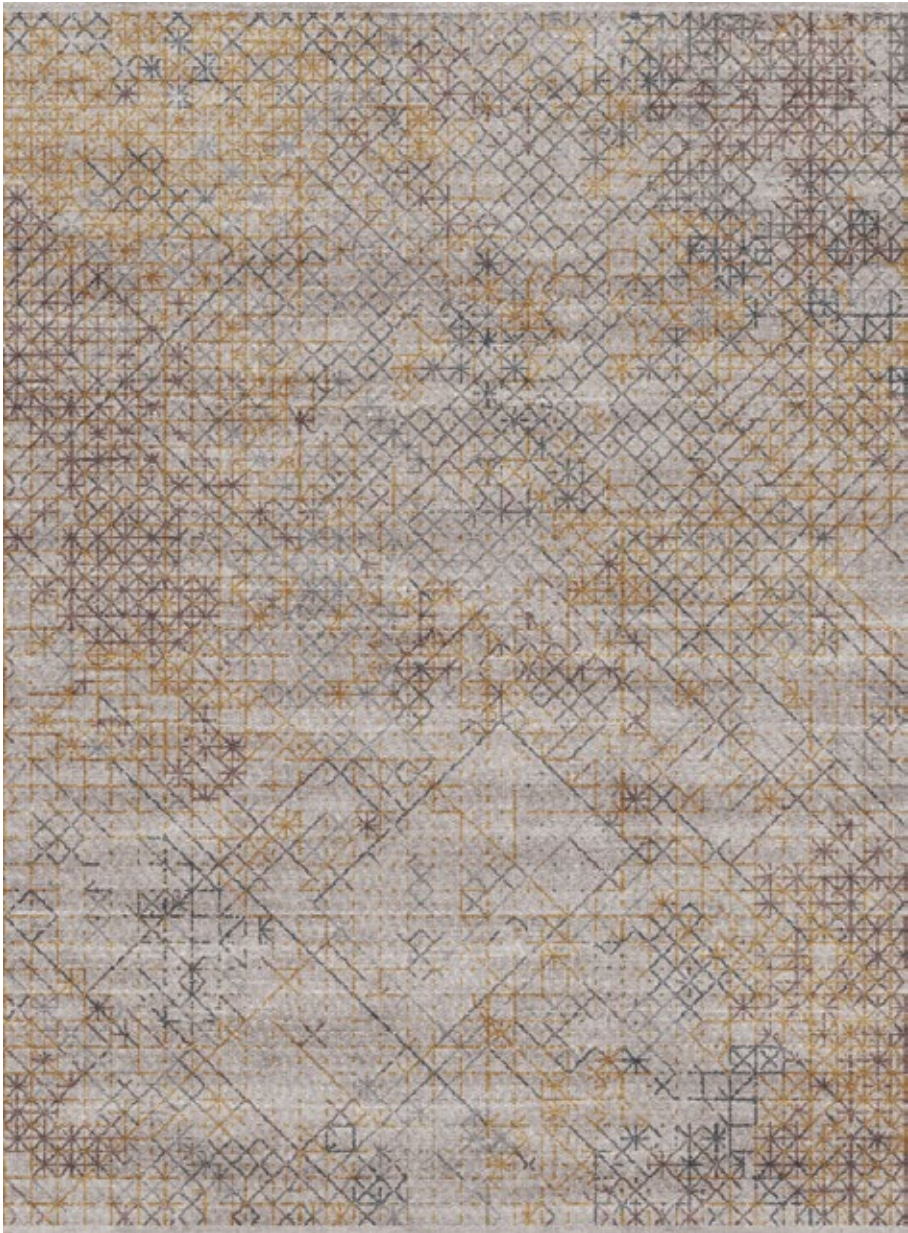


**Design&Colour** Frost in Raincloud  
**Weaving Technique** Ibiza  
**Production** Hand-knotted in 100% Ghazni wool in Lahore, Punjab  
Custom materials, colours and sizes available upon request



Caleido Concept No.1  
LIGHT TONE

FROST IN VANILLA



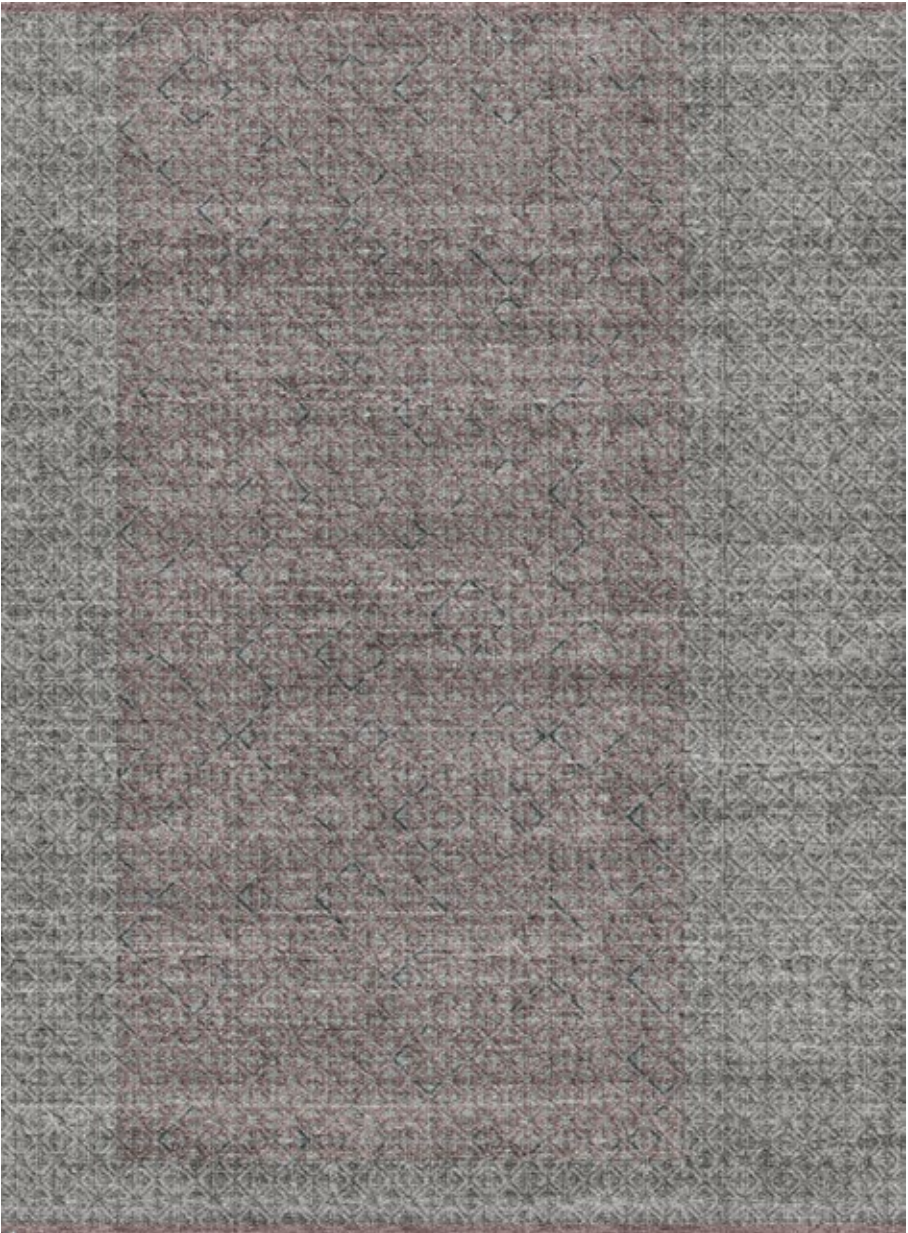
Size 220 x 300 cm



**Design&Colour** Frost in Vanilla  
**Weaving Technique** Tango  
**Production** Hand-knotted in 100% Ghazni wool in Lahore, Punjab  
Custom materials, colours and sizes available upon request

Caleido Concept No.1  
LIGHT TONE

FUROSA IN CHESTNUT



Size 220 x 300 cm

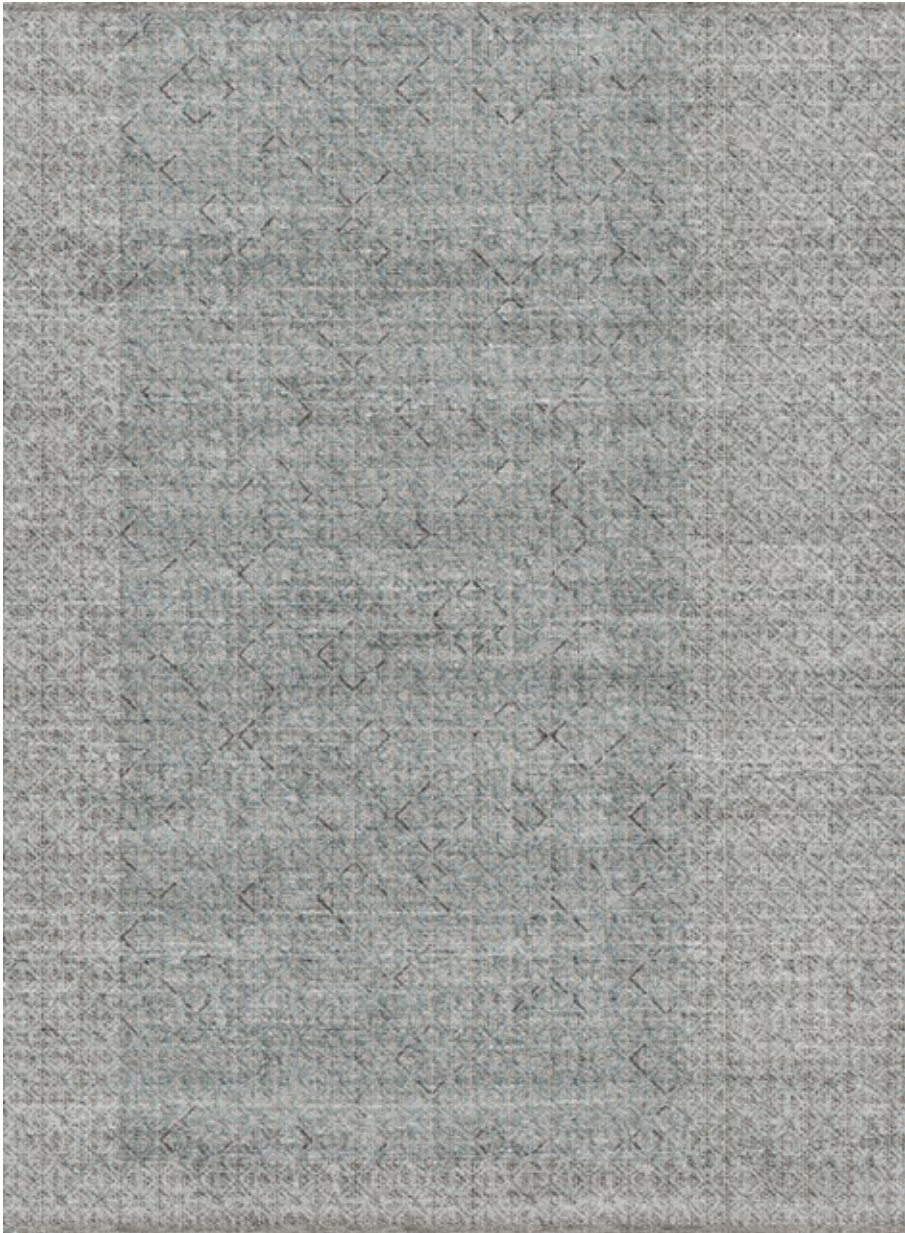


**Design&Colour** Furosa in Chestnut  
**Weaving Technique** Gamla  
**Production** Hand-knotted in 100% Ghazni wool in Lahore, Punjab  
Custom materials, colours and sizes available upon request



Caleido Concept No.1  
LIGHT TONE

FUROSА IN TRUEBLUE



Size 220 x 300 cm



**Design&Colour** Furosa in Trueblue  
**Weaving Technique** Tango  
**Production** Hand-knotted in 100% Ghazni wool in Lahore, Punjab  
Custom materials, colours and sizes available upon request

Caleido Concept No.1  
LIGHT TONE

FUROSА IN VENICE



Size 220 x 300 cm



**Design&Colour** Furosa in Venice  
**Weaving Technique** Ibiza  
**Production** Hand-knotted in 100% Ghazni wool in Lahore, Punjab  
Custom materials, colours and sizes available upon request

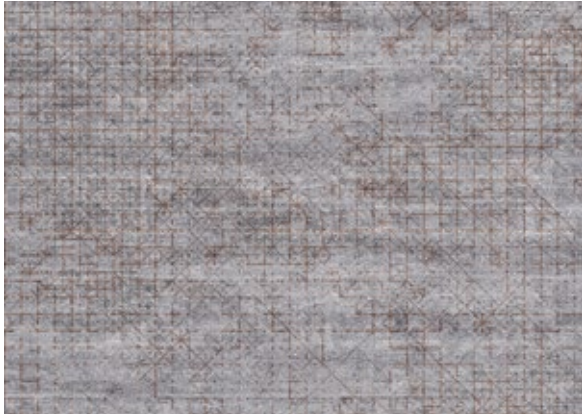


Caleido Concept No.1 – TONES

# MEDIUM TONES



Fracto in Adobe



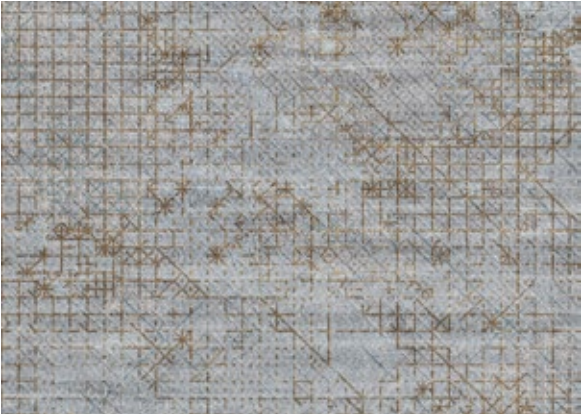
Frost in Oysterbay



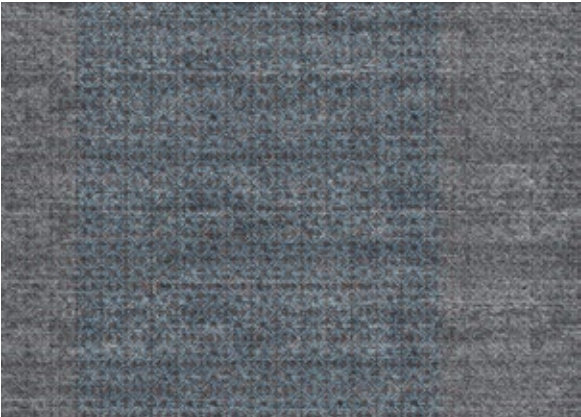
Furosa in Capri



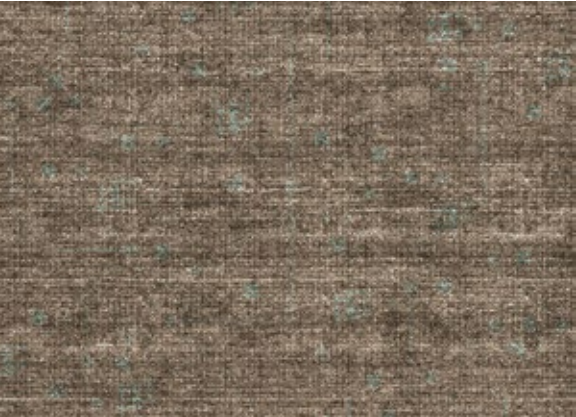
Fracto in Cactus



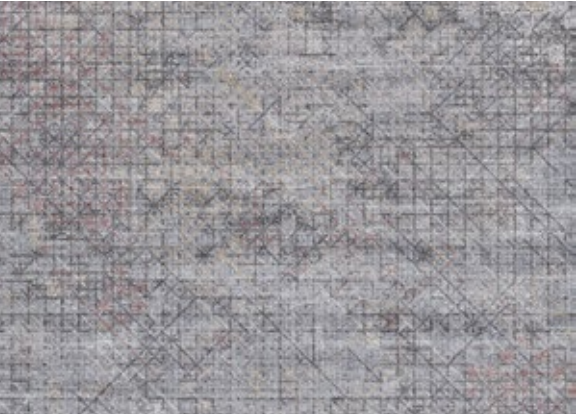
Frost in Seashell



Furosa in Navy



Fracto in Tiffany



Frost in Truffle



Furosa in Starburst

Caleido Concept No.1  
MID TONE

## FRACTO IN ADOBE



Size 220 x 300 cm



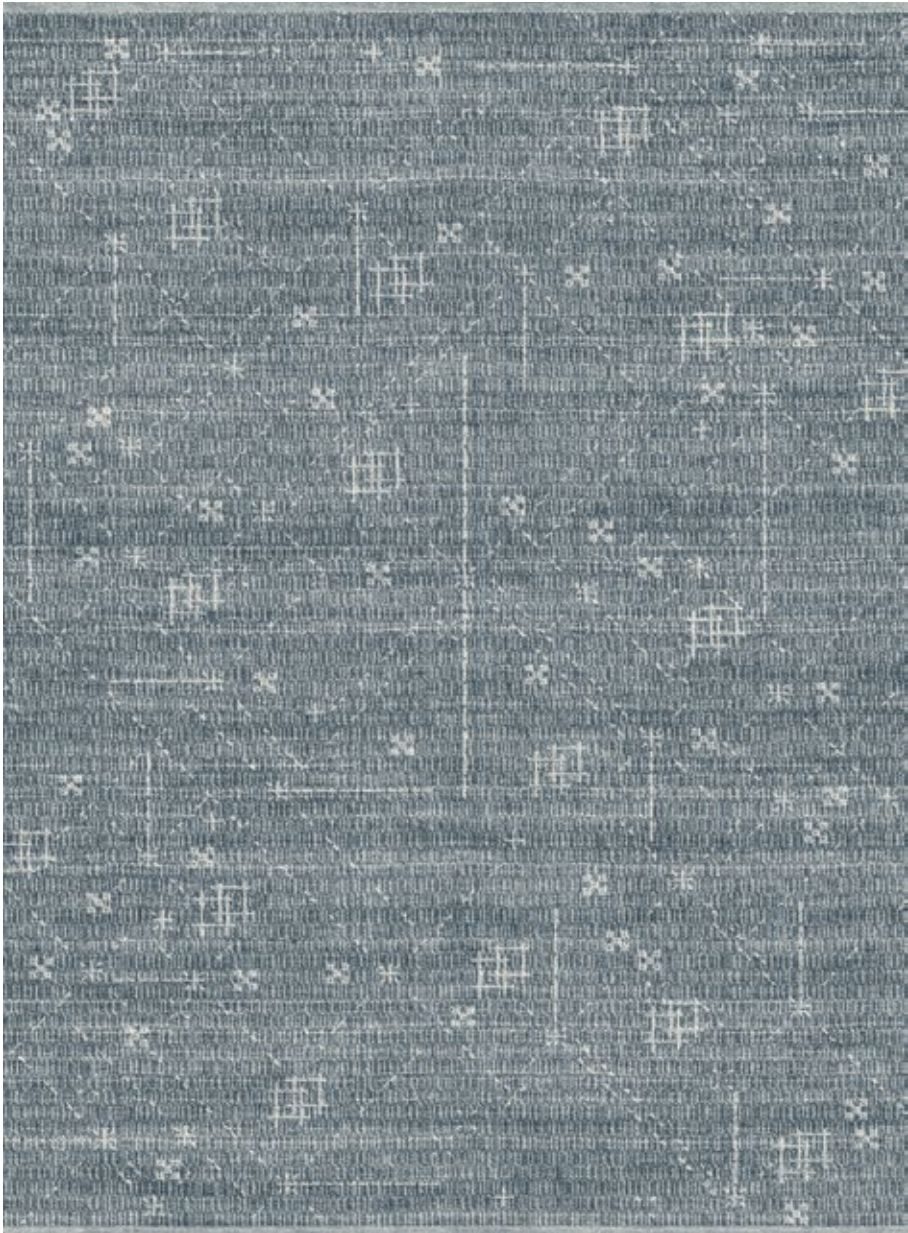
**Design&Colour** Fracto in Adobe  
**Weaving Technique** Ibiza

**Production** Hand-knotted in 100% Ghazni wool in Lahore, Punjab  
Custom materials, colours and sizes available upon request



Caleido Concept No.1  
MID TONE

FRACTO IN CACTUS



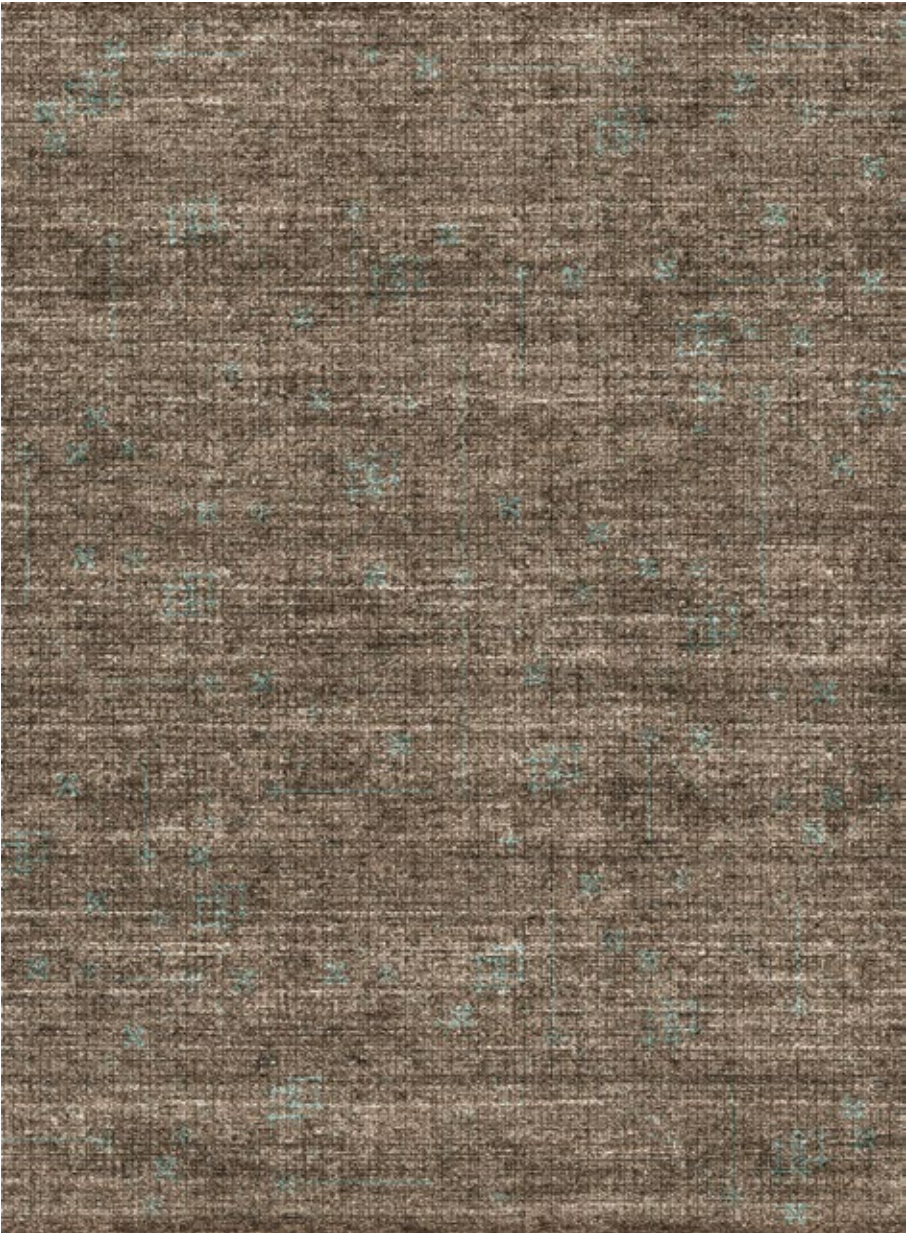
Size 220 x 300 cm



**Design&Colour** Fracto in Cactus  
**Weaving Technique** Tango  
**Production** Hand-knotted in 100% Ghazni wool in Lahore, Punjab  
Custom materials, colours and sizes available upon request

Caleido Concept No.1  
MID TONE

FRACTO IN TIFFANY



Size 220 x 300 cm

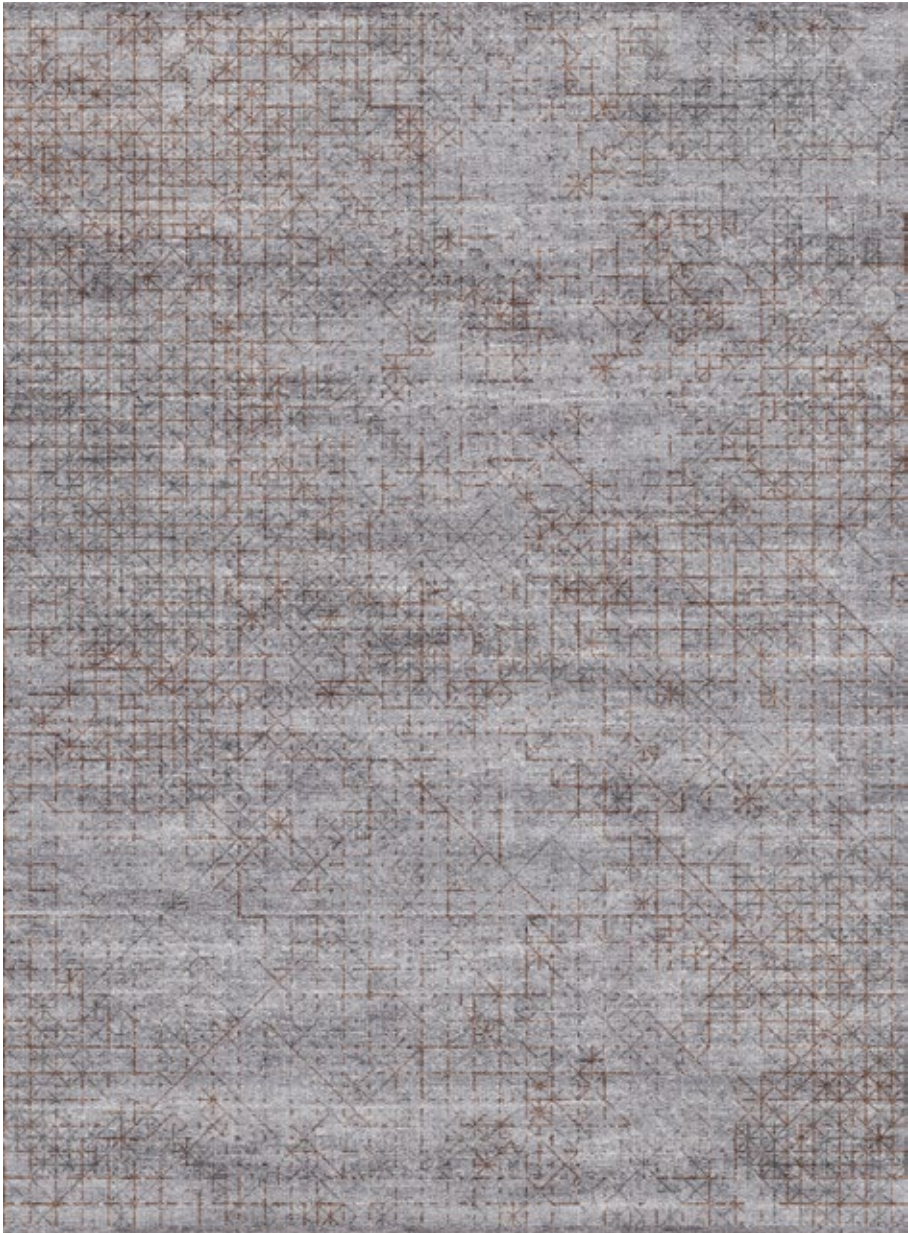


**Design&Colour** Fracto in Tiffany  
**Weaving Technique** Gamla  
**Production** Hand-knotted in 100% Ghazni wool in Lahore, Punjab  
Custom materials, colours and sizes available upon request

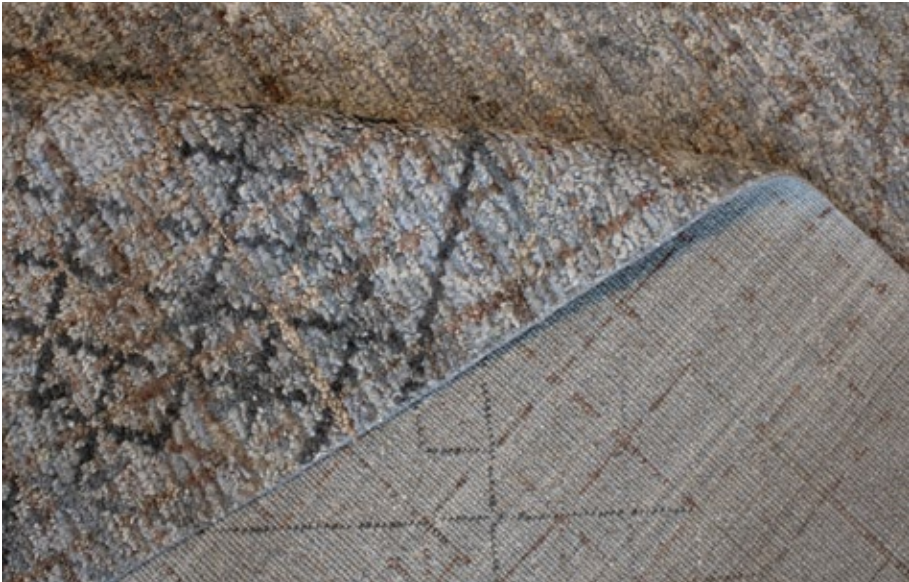


Caleido Concept No.1  
MID TONE

FROST IN OYSTERBAY



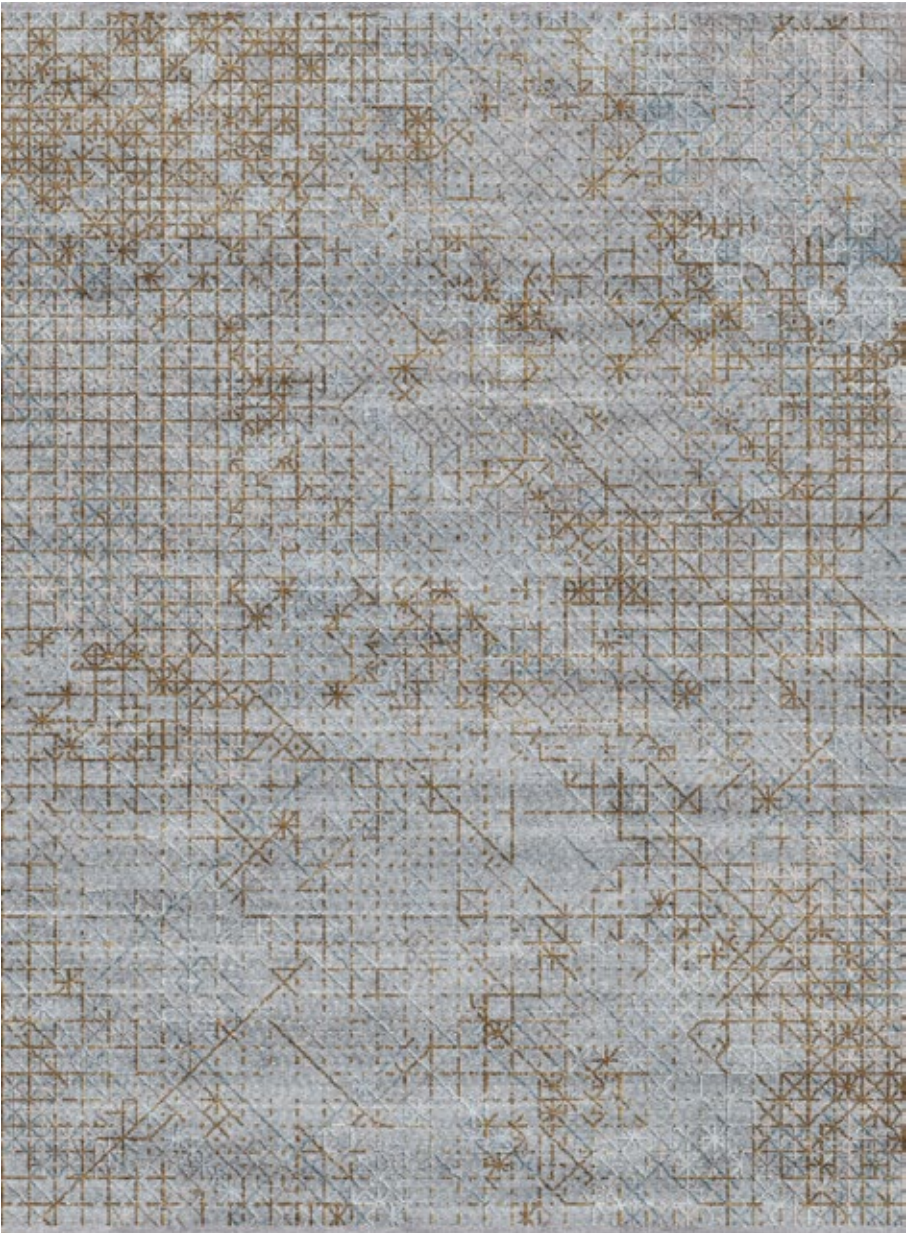
Size 220 x 300 cm



**Design&Colour** Frost in Oysterbay  
**Weaving Technique** Ibiza  
**Production** Hand-knotted in 100% Ghazni wool in Lahore, Punjab  
Custom materials, colours and sizes available upon request

Caleido Concept No.1  
MID TONE

FROST IN SEASHELL



Size 220 x 300 cm

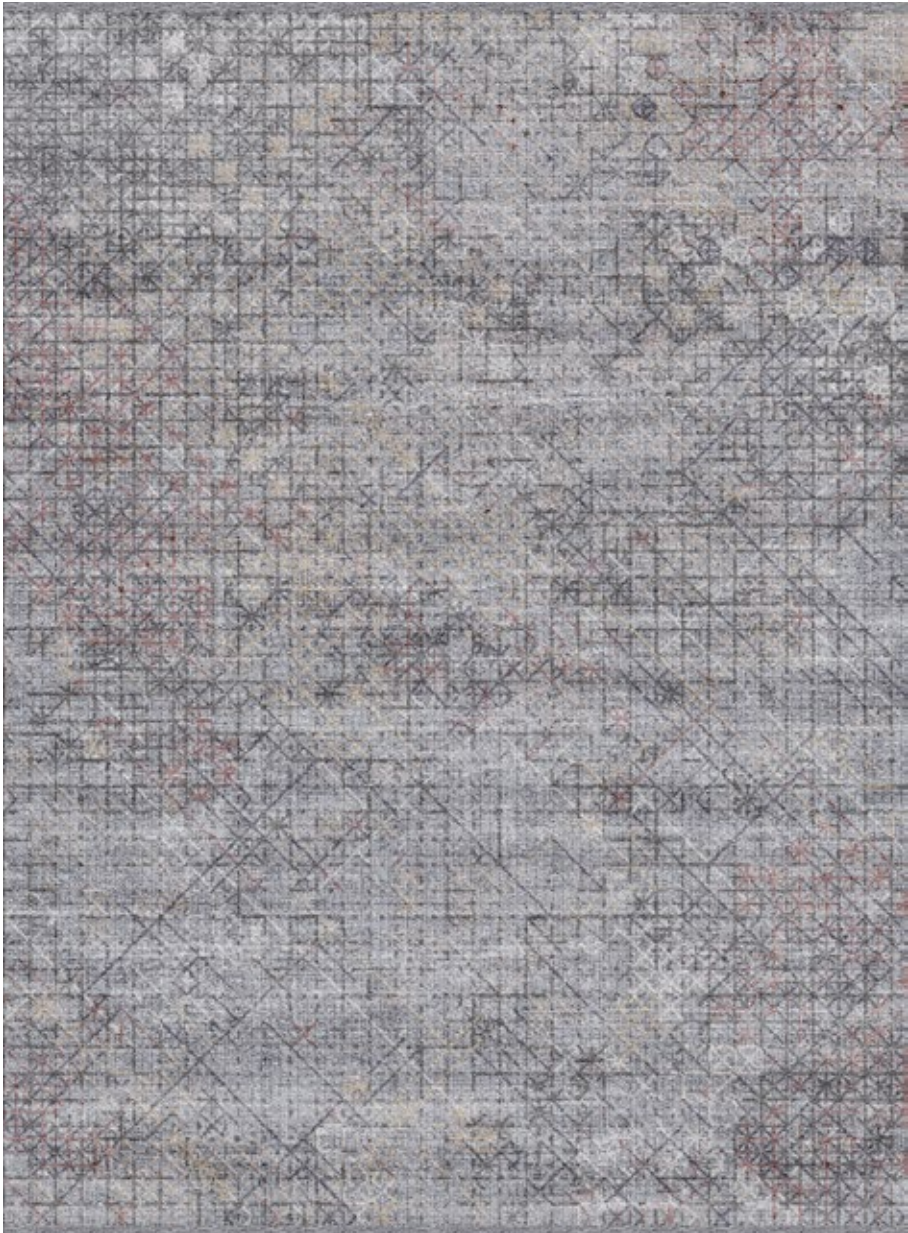


**Design&Colour** Frost in Seashell  
**Weaving Technique** Tango  
**Production** Hand-knotted in 100% Ghazni wool in Lahore, Punjab  
Custom materials, colours and sizes available upon request



Caleido Concept No.1  
MID TONE

FROST IN TRUFFLE



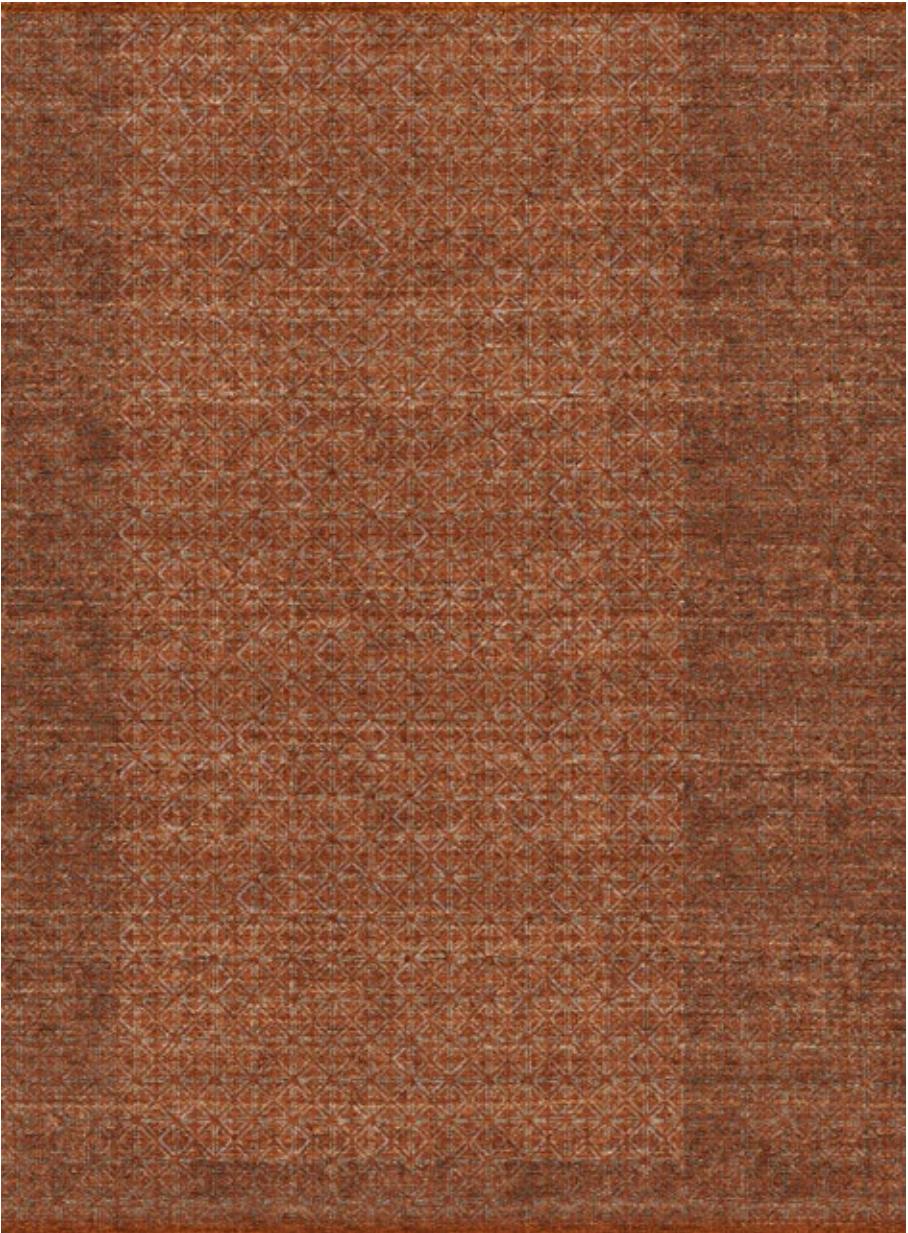
Size 220 x 300 cm



**Design&Colour** Frost in Truffle  
**Weaving Technique** Gamla  
**Production** Hand-knotted in 100% Ghazni wool in Lahore, Punjab  
Custom materials, colours and sizes available upon request

Caleido Concept No.1  
MID TONE

FUROSA IN CAPRI



Size 220 x 300 cm

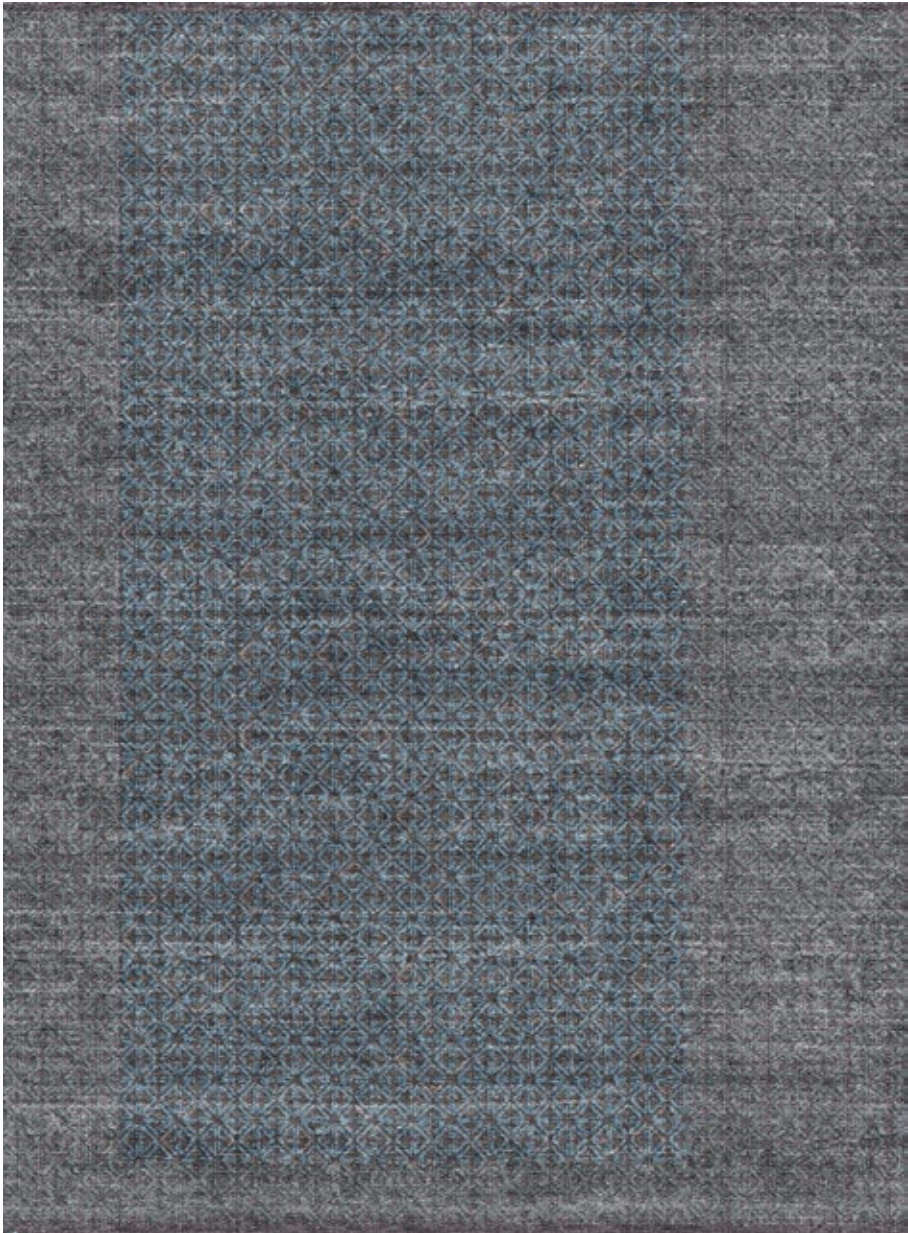


**Design&Colour** Furosa in Capri  
**Weaving Technique** Ibiza  
**Production** Hand-knotted in 100% Ghazni wool in Lahore, Punjab  
Custom materials, colours and sizes available upon request

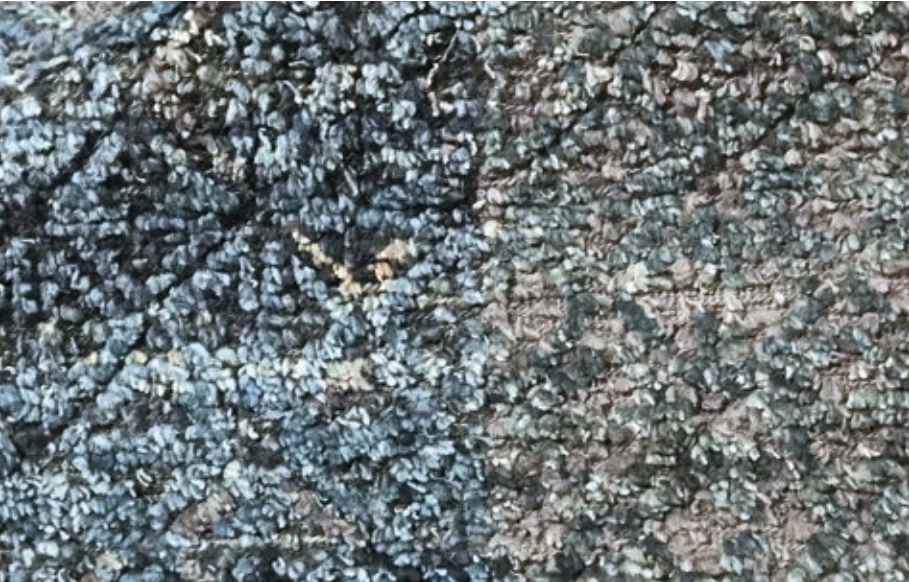


Caleido Concept No.1  
MID TONE

FUROSА IN NAVY



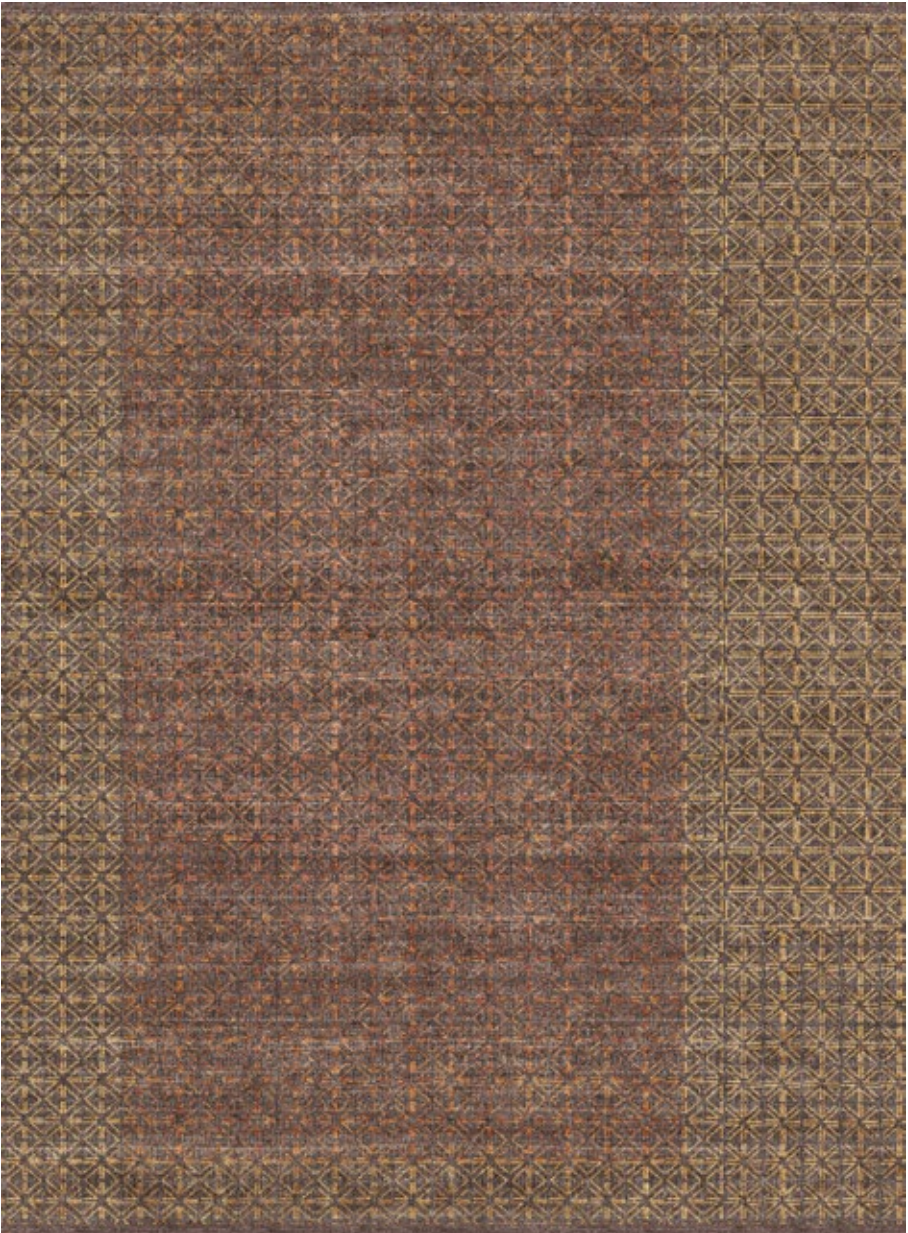
Size 220 x 300 cm



**Design&Colour** Furosa in Navy  
**Weaving Technique** Gamla  
**Production** Hand-knotted in 100% Ghazni wool in Lahore, Punjab  
Custom materials, colours and sizes available upon request

Caleido Concept No.1  
MID TONE

FUROSА IN STARBURST



Size 220 x 300 cm



**Design&Colour** Furosa in Starburst  
**Weaving Technique** Tango  
**Production** Hand-knotted in 100% Ghazni wool in Lahore, Punjab  
Custom materials, colours and sizes available upon request

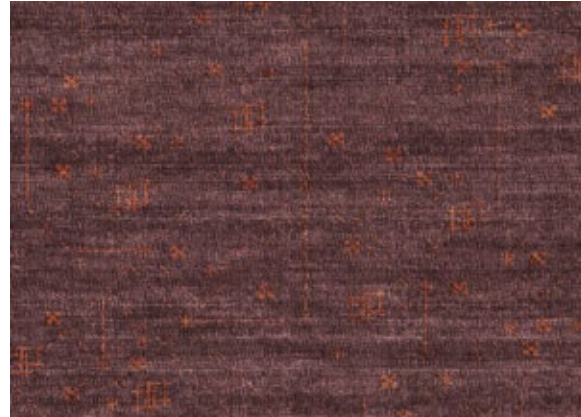


Caleido Concept No.1 – TONES

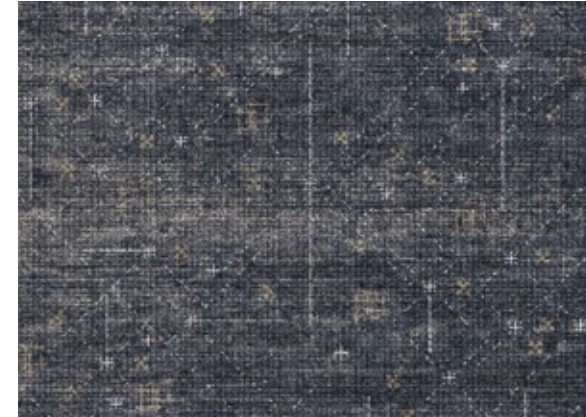
# DARK TONES



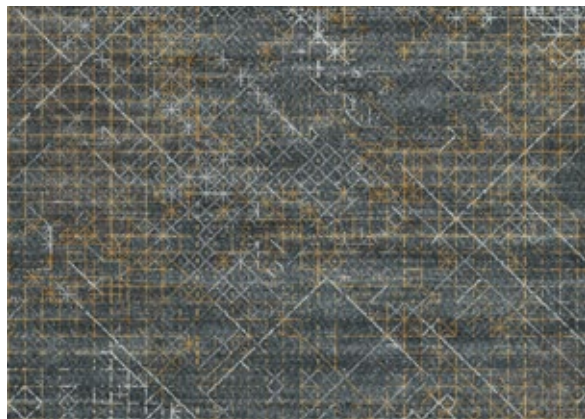
Fracto in Ink



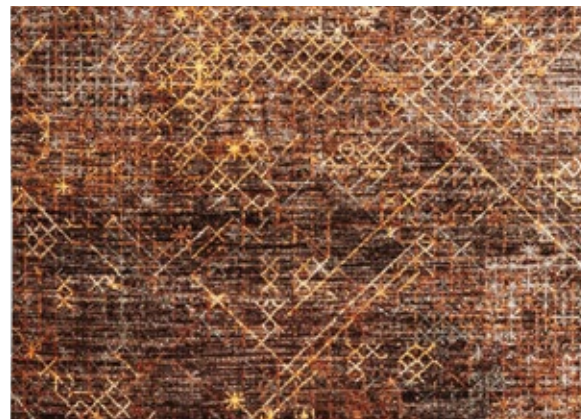
Fracto in Rust



Fracto in Sandstone



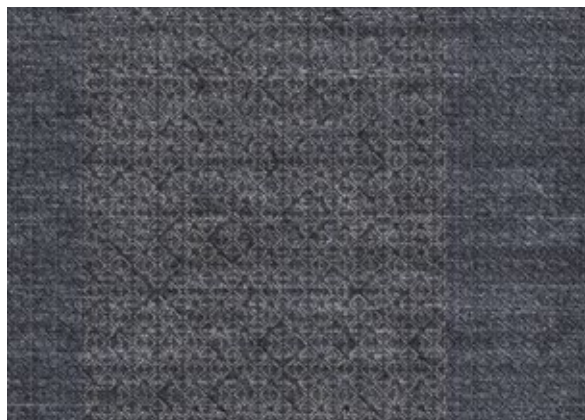
Frost in Emerald



Frost in Jazzberry



Frost in Mamba



Furosa in Grape



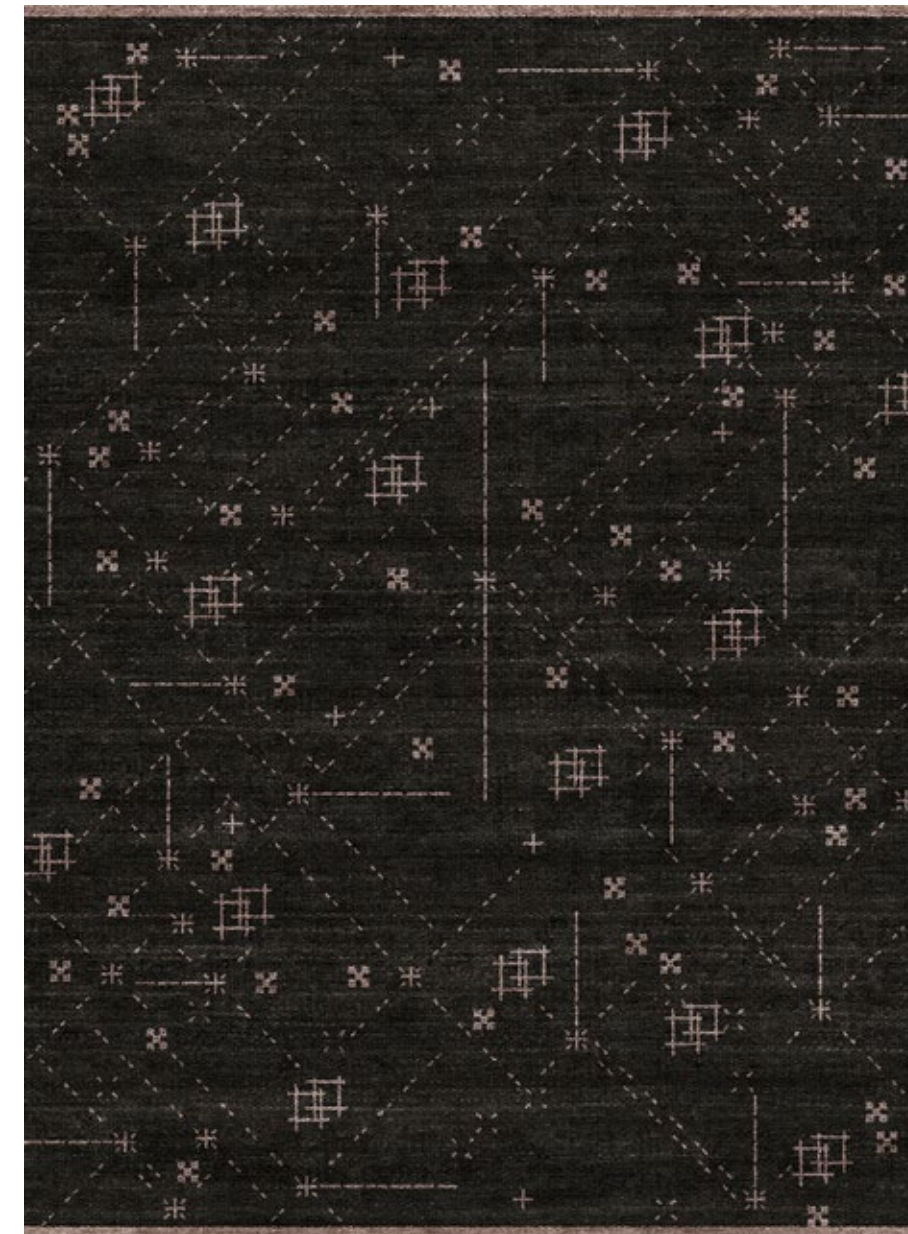
Furosa in Teal



Furosa in Thunder

Caleido Concept No.1  
DARK TONE

## FRACTO IN INK



Size 220 x 300 cm



**Design&Colour** Fracto in Ink  
**Weaving Technique** Ibiza  
**Production** Hand-knotted in 100% Ghazni wool in Lahore, Punjab  
Custom materials, colours and sizes available upon request

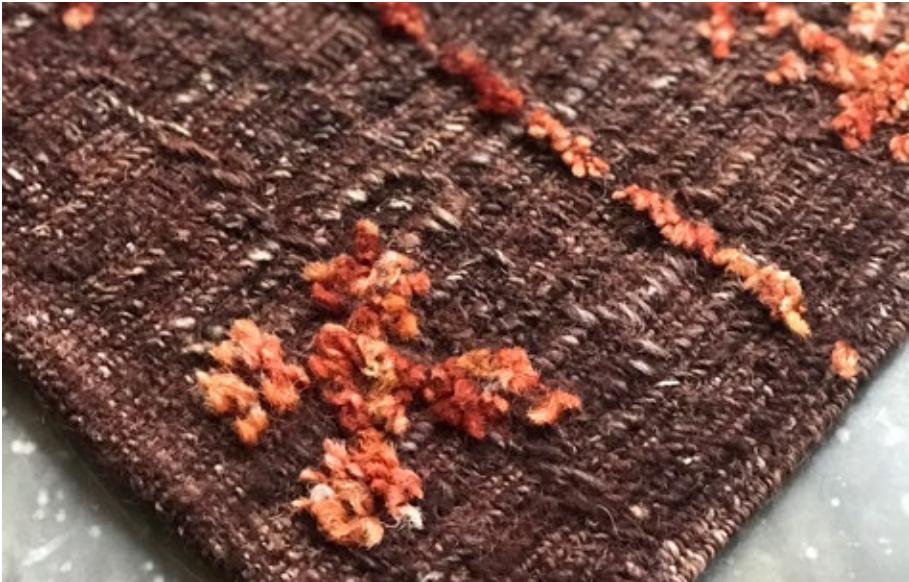


Caleido Concept No.1  
**DARK TONE**

**FRACTO IN RUST**



Size 220 x 300 cm



**Design&Colour** Fracto in Rust  
**Weaving Technique** Tango  
**Production** Hand-knotted in 100% Ghazni wool in Lahore, Punjab  
Custom materials, colours and sizes available upon request

Caleido Concept No.1  
**DARK TONE**

**FRACTO IN SANDSTONE**



Size 220 x 300 cm

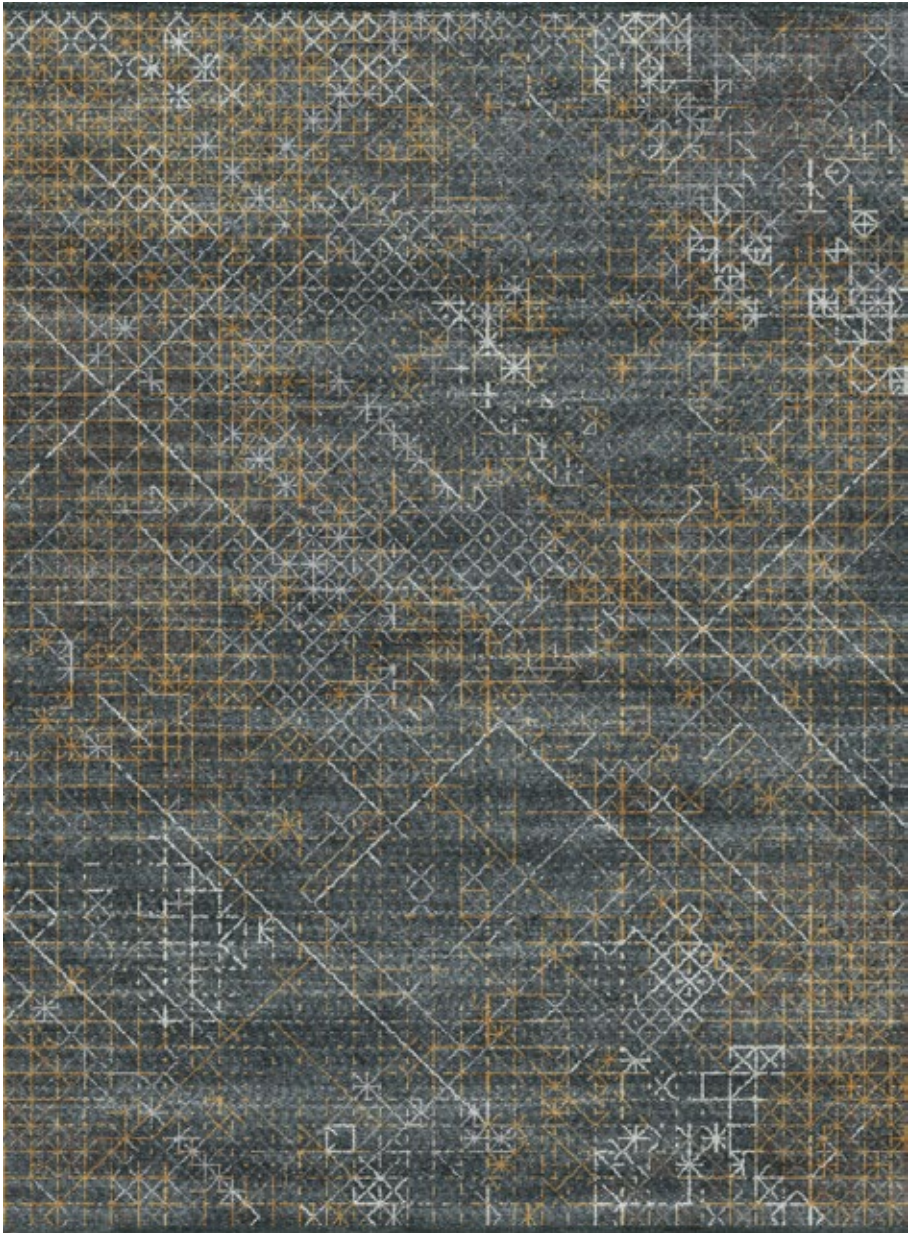


**Design&Colour** Fracto in Sandstone  
**Weaving Technique** Gamla  
**Production** Hand-knotted in 100% Ghazni wool in Lahore, Punjab  
Custom materials, colours and sizes available upon request



Caleido Concept No.1  
DARK TONE

FROST IN EMERALD



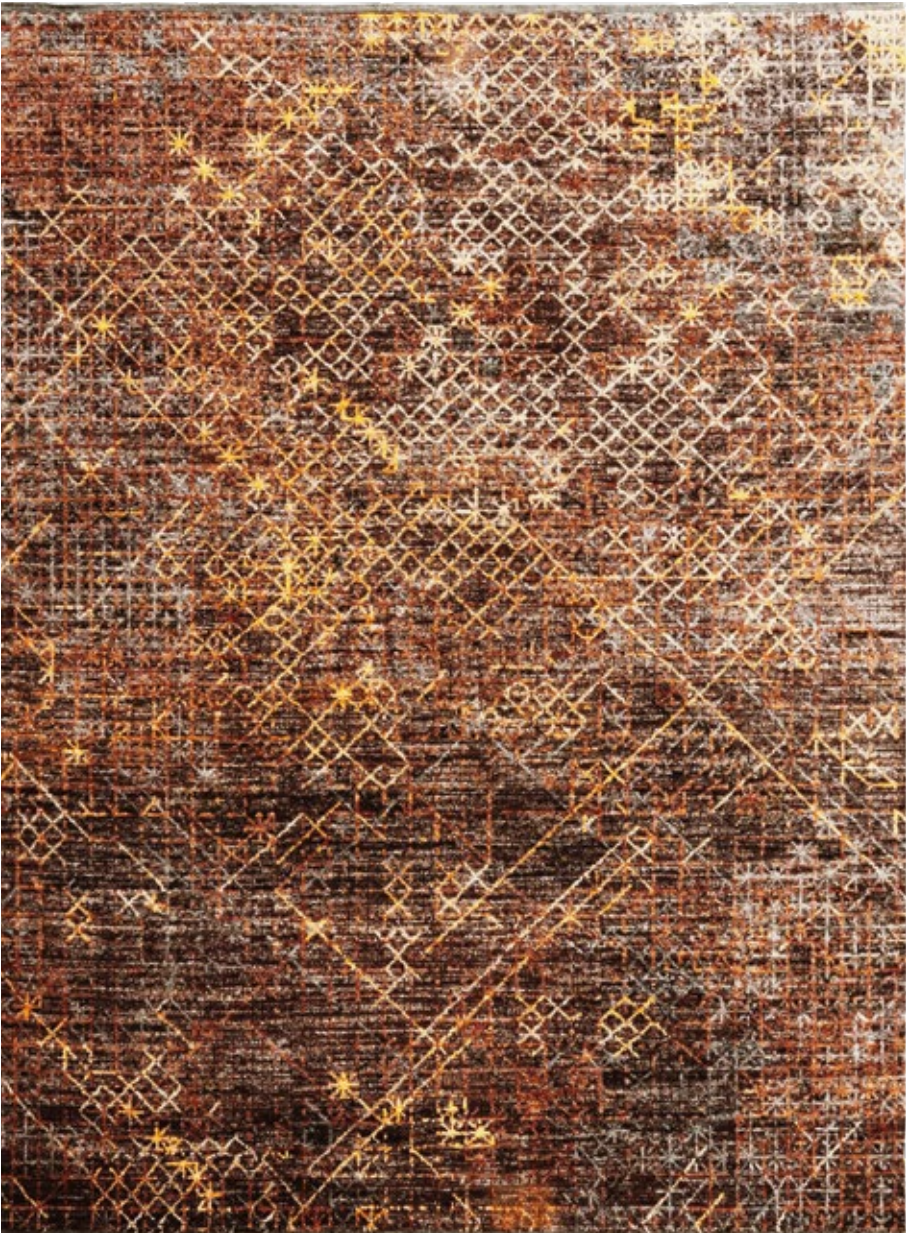
Size 220 x 300 cm



**Design&Colour** Frost in Emerald  
**Weaving Technique** Tango  
**Production** Hand-knotted in 100% Ghazni wool in Lahore, Punjab  
Custom materials, colours and sizes available upon request

Caleido Concept No.1  
DARK TONE

FROST IN JAZZBERRY



Size 220 x 300 cm



**Design&Colour** Frost in Jazzberry  
**Weaving Technique** Gamla  
**Production** Hand-knotted in 100% Ghazni wool in Lahore, Punjab  
Custom materials, colours and sizes available upon request



Caleido Concept No.1  
DARK TONE

FROST IN MAMBA



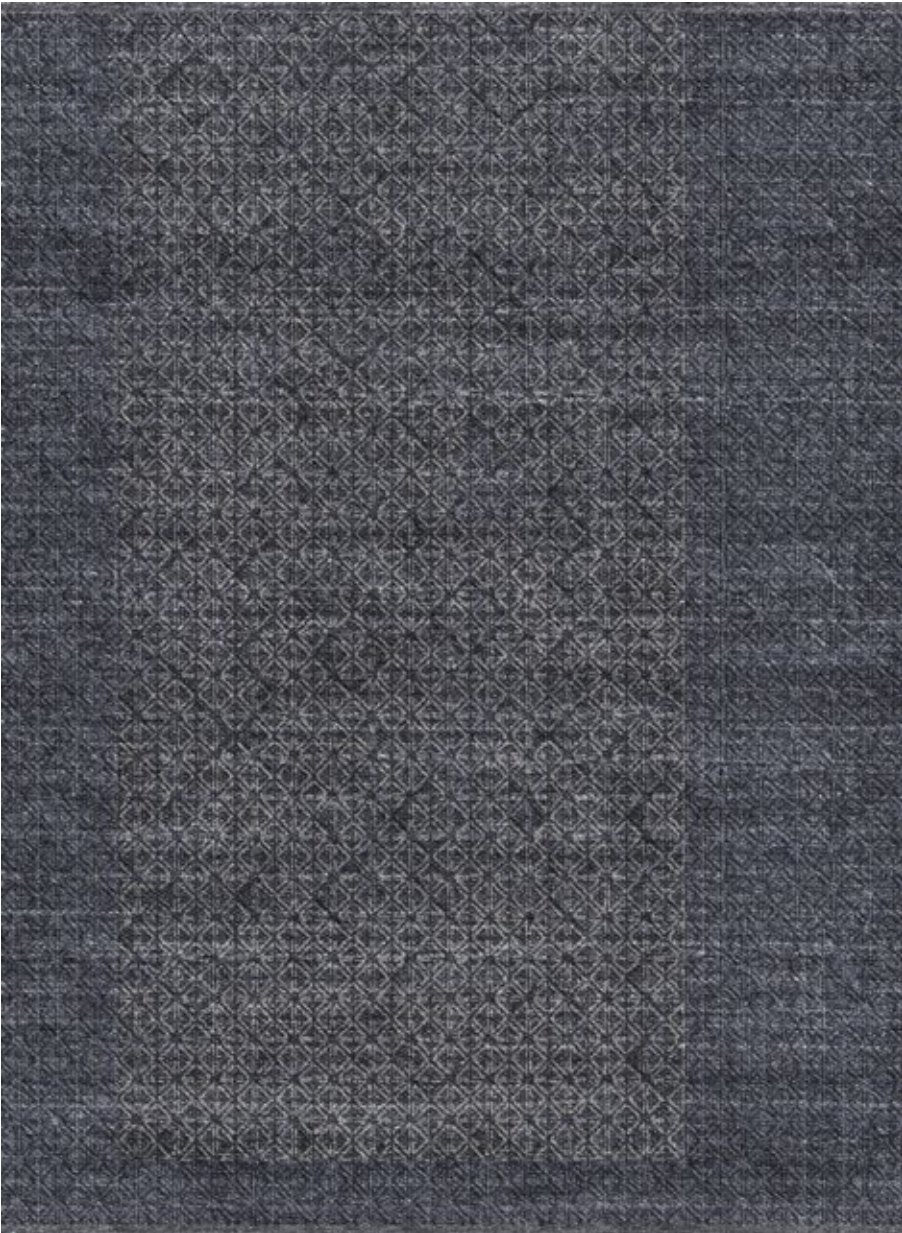
Size 220 x 300 cm



**Design&Colour** Frost in Mamba  
**Weaving Technique** Ibiza  
**Production** Hand-knotted in 100% Ghazni wool in Lahore, Punjab  
Custom materials, colours and sizes available upon request

Caleido Concept No.1  
DARK TONE

FUROSA IN GRAPE



Size 220 x 300 cm



**Design&Colour** Furosa in Grape  
**Weaving Technique** Gamla  
**Production** Hand-knotted in 100% Ghazni wool in Lahore, Punjab  
Custom materials, colours and sizes available upon request

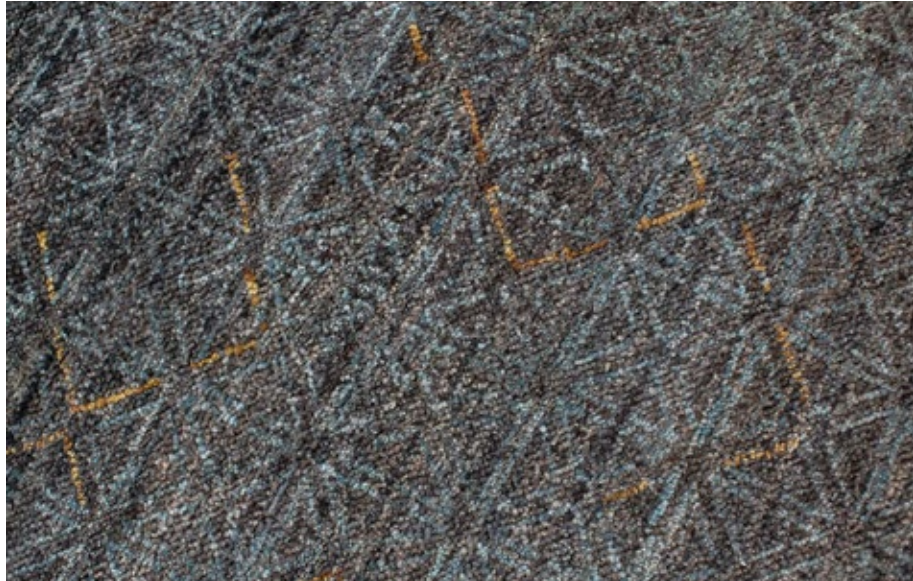


Caleido Concept No.1  
DARK TONE

FUROSА IN TEAL



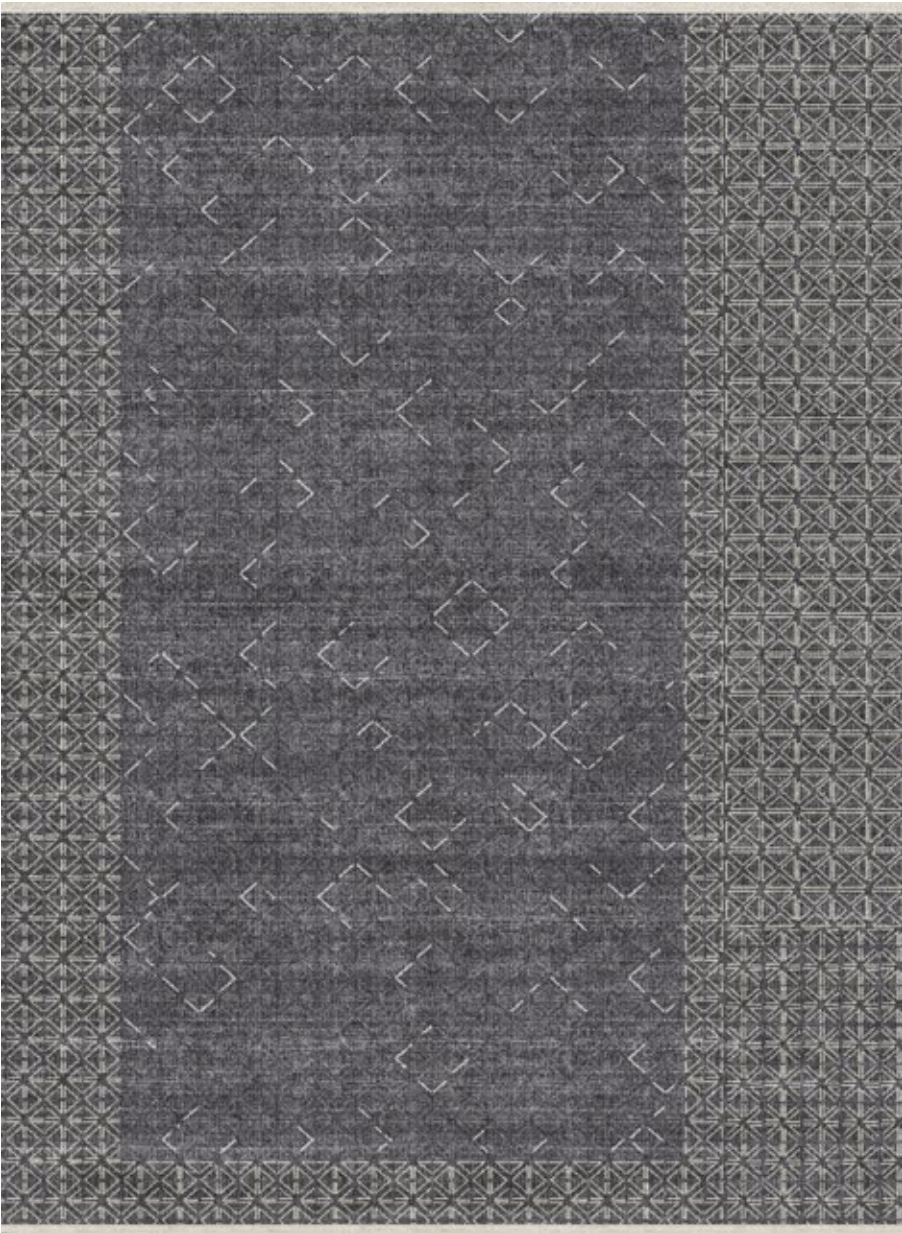
Size 220 x 300 cm



**Design&Colour** Furosa in Teal  
**Weaving Technique** Ibiza  
**Production** Hand-knotted in 100% Ghazni wool in Lahore, Punjab  
Custom materials, colours and sizes available upon request

Caleido Concept No.1  
DARK TONE

FUROSА IN THUNDER



Size 220 x 300 cm



**Design&Colour** Furosa in Thunder  
**Weaving Technique** Tango  
**Production** Hand-knotted in 100% Ghazni wool in Lahore, Punjab  
Custom materials, colours and sizes available upon request

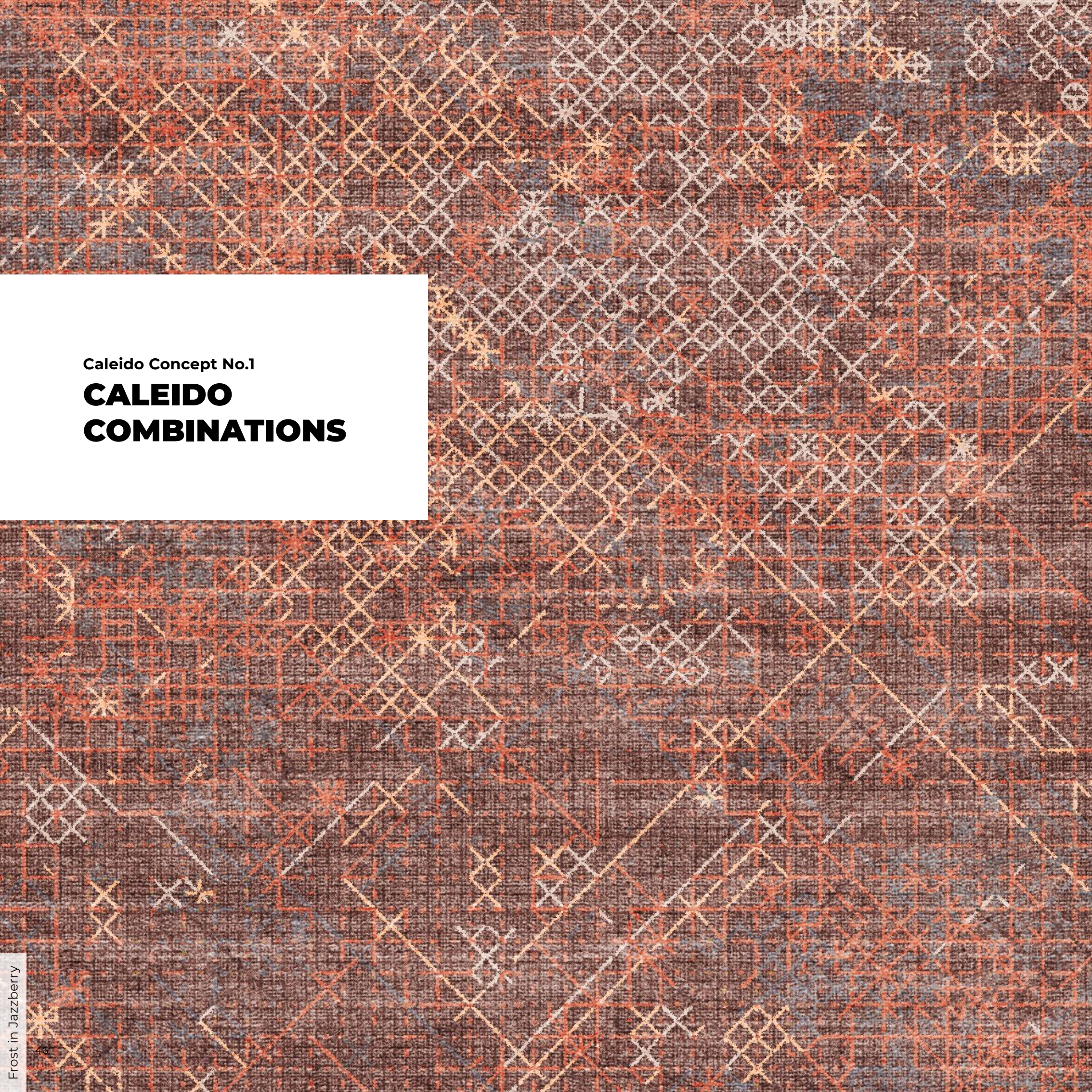




# Our Caleido carpets are always deep in conversation.

Each rug in the Caleido Concept collection is modular and infinitely adaptable. No matter which combination of weave, design, and tone you choose, every choice gives your rug a voice so it can easily “chat” with other Caleido carpets.

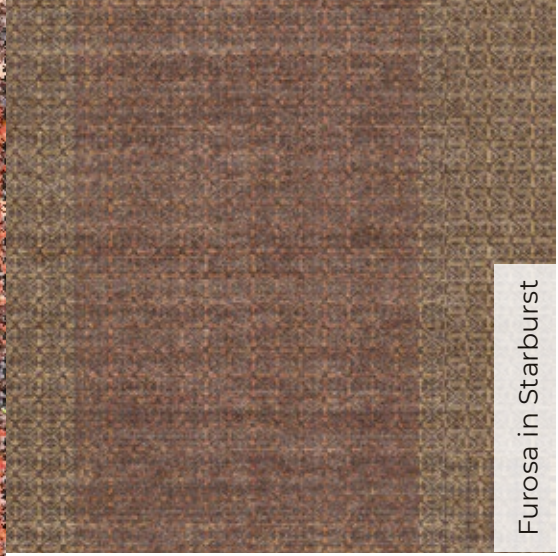




Caleido Concept No.1

**CALEIDO  
COMBINATIONS**

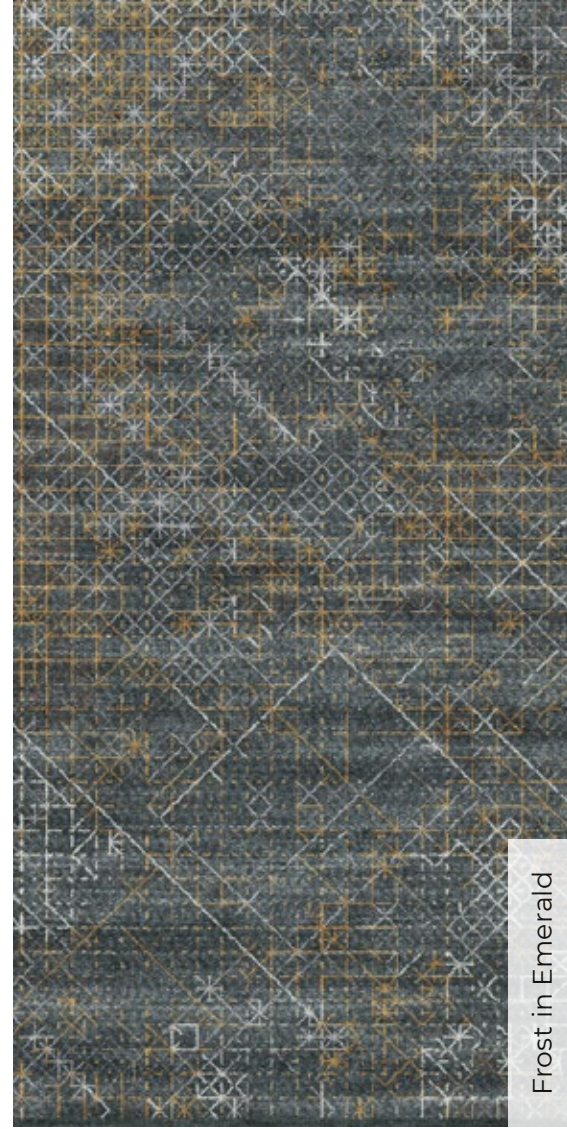
Frost in Jazzberry



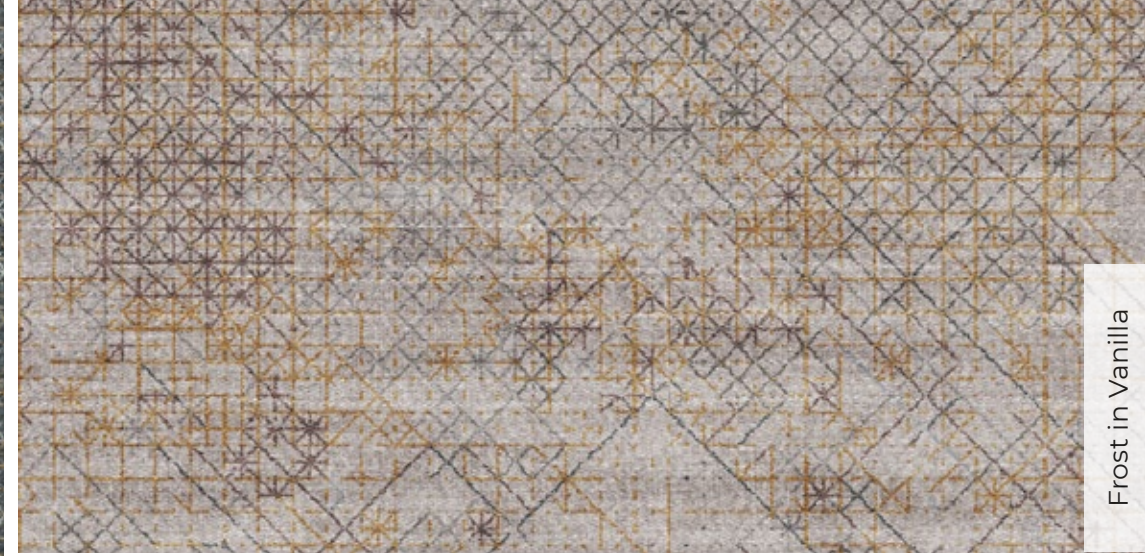
Furosa in Starburst



Fracto in Rust



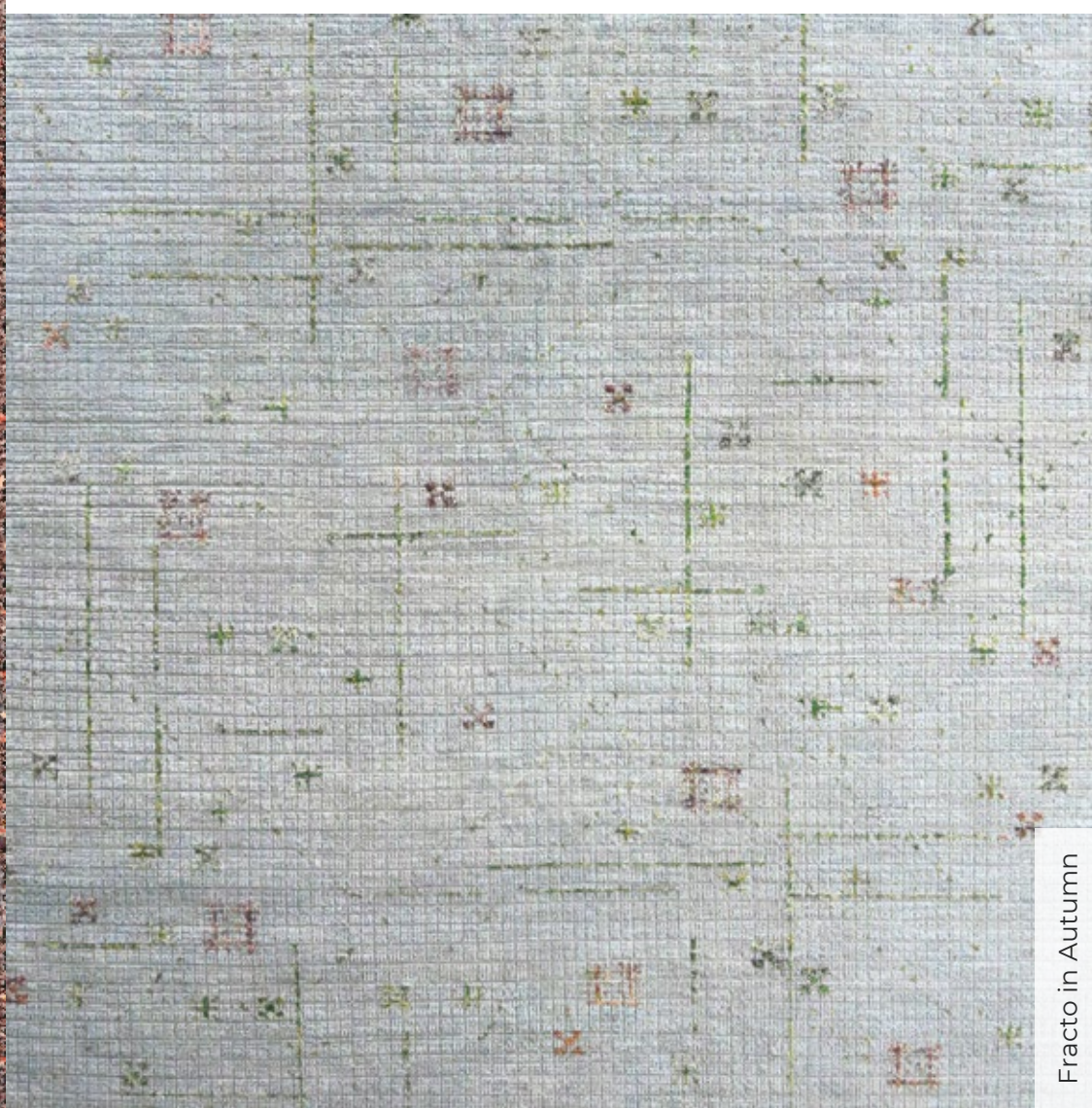
Frost in Emerald



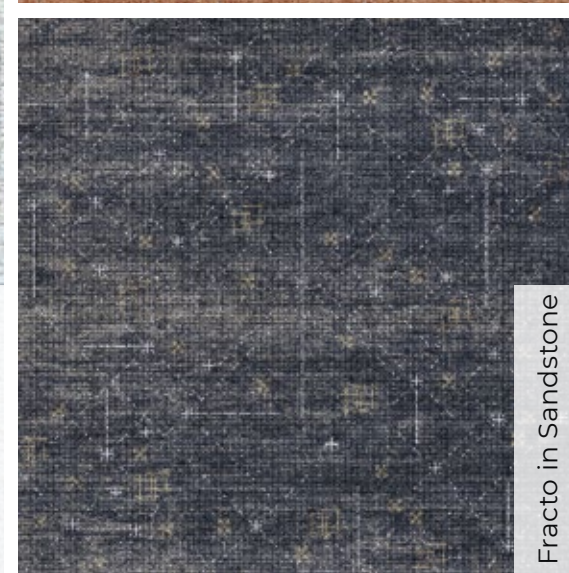
Frost in Vanilla



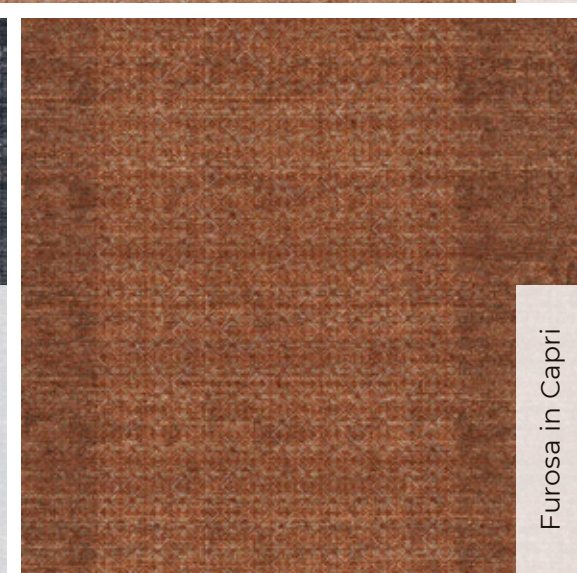
Fracto in Adobe



Fracto in Autumn

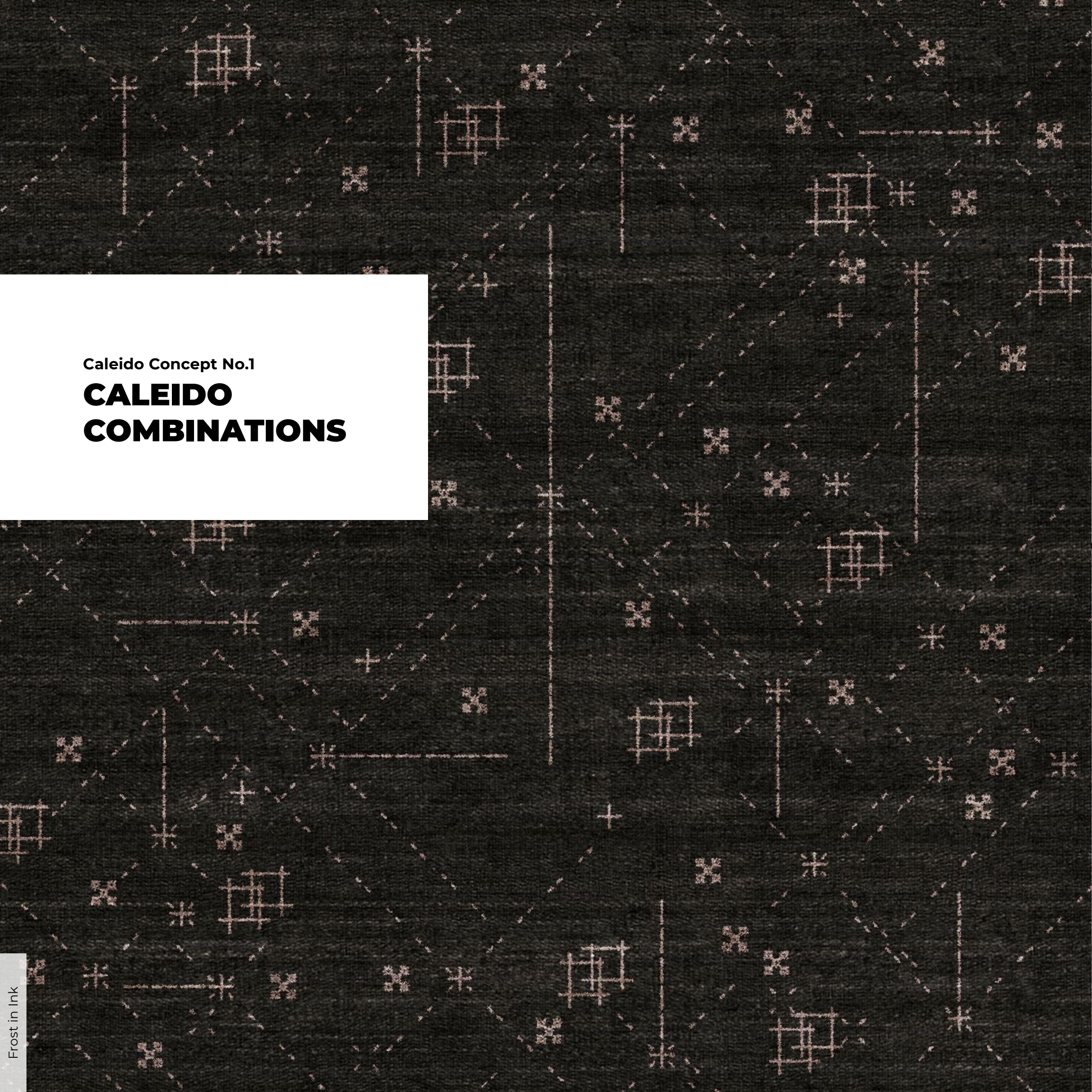


Fracto in Sandstone



Furosa in Capri

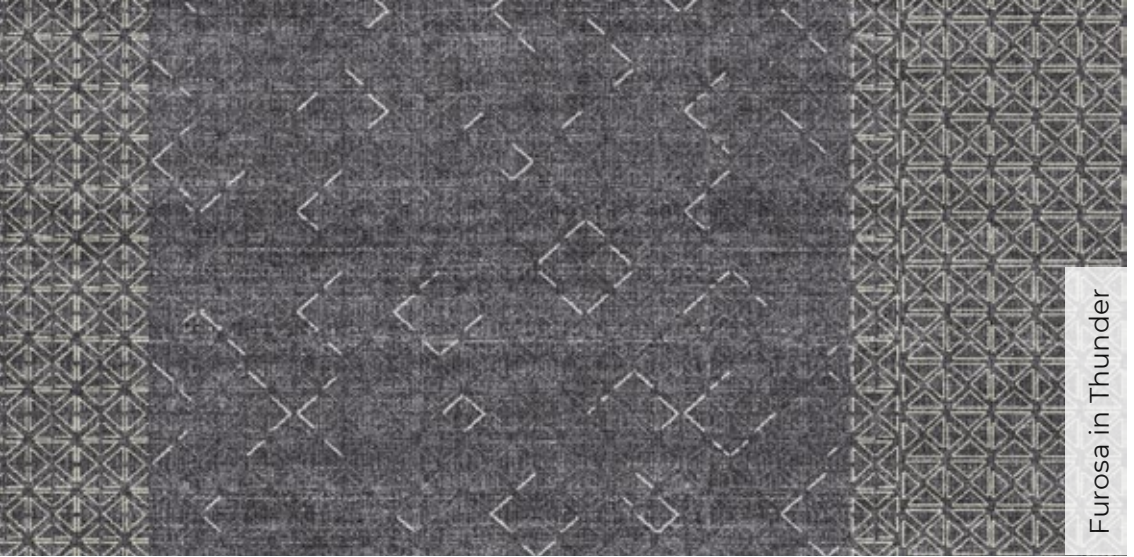




Caleido Concept No.1

CALEIDO  
COMBINATIONS

Frost in Ink



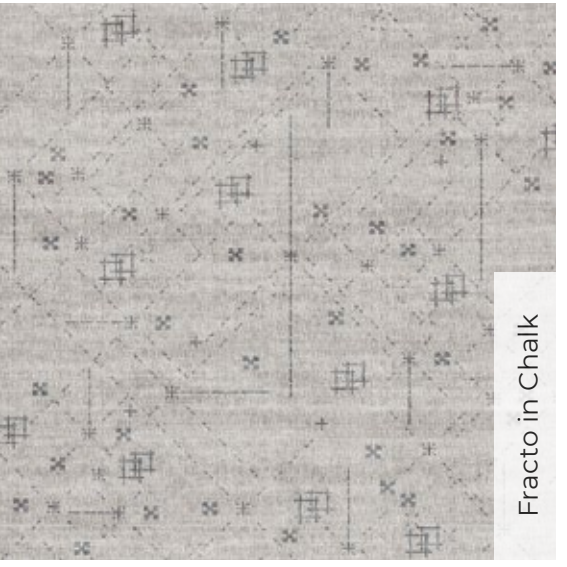
Furosa in Thunder



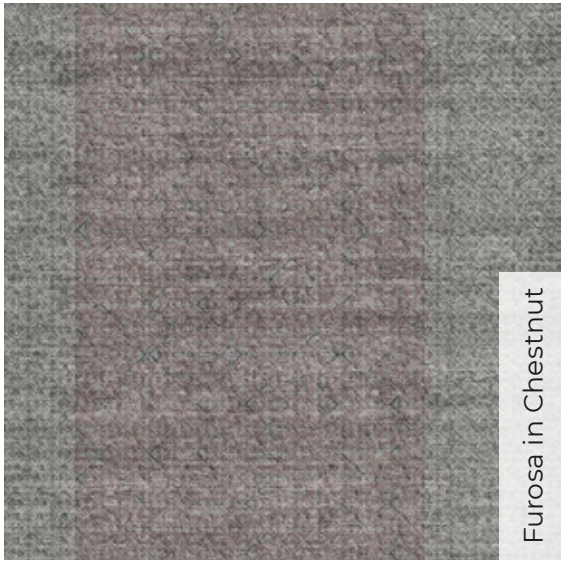
Furosa in Venice



Frost in Bermuda



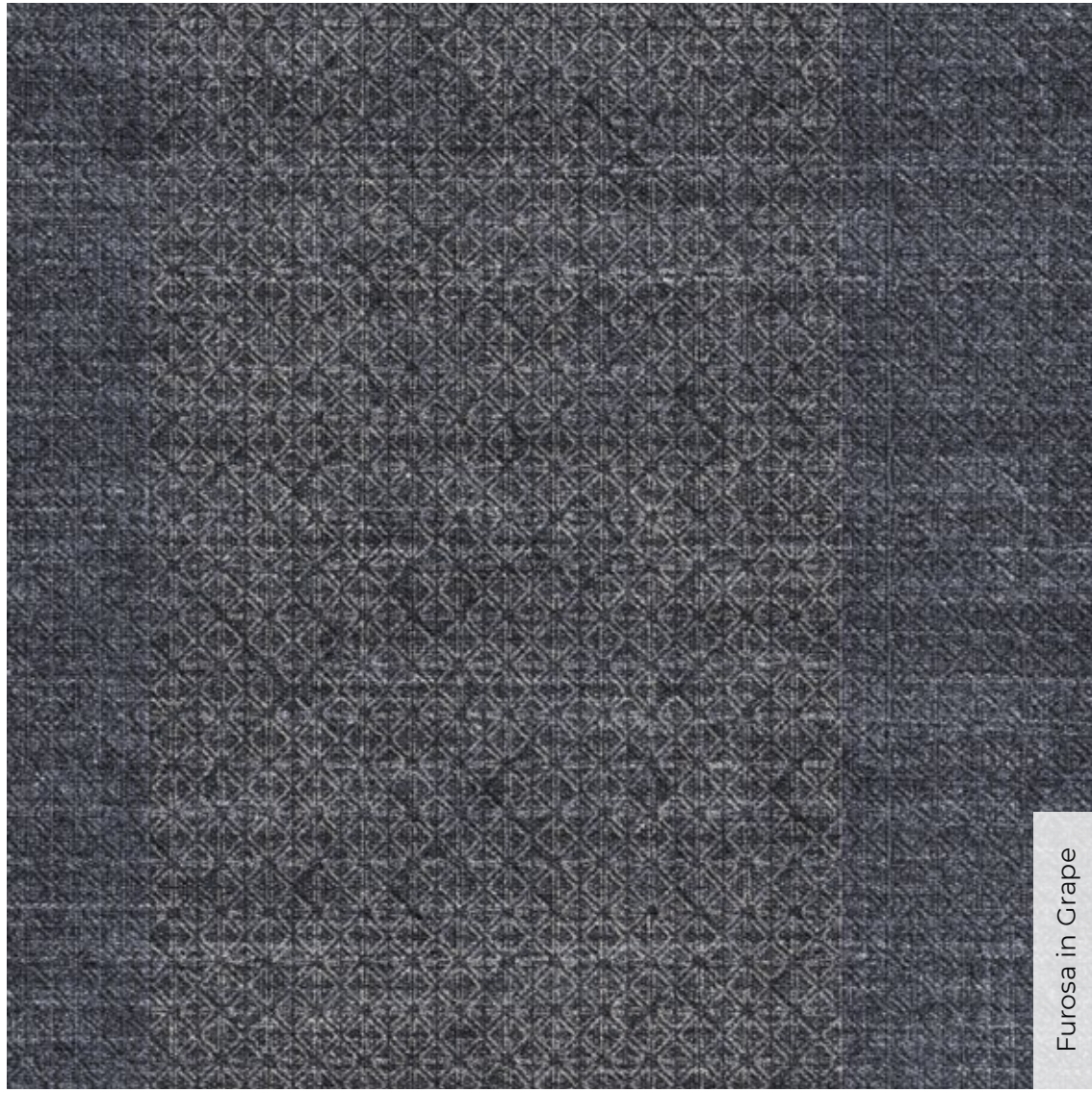
Fracto in Chalk



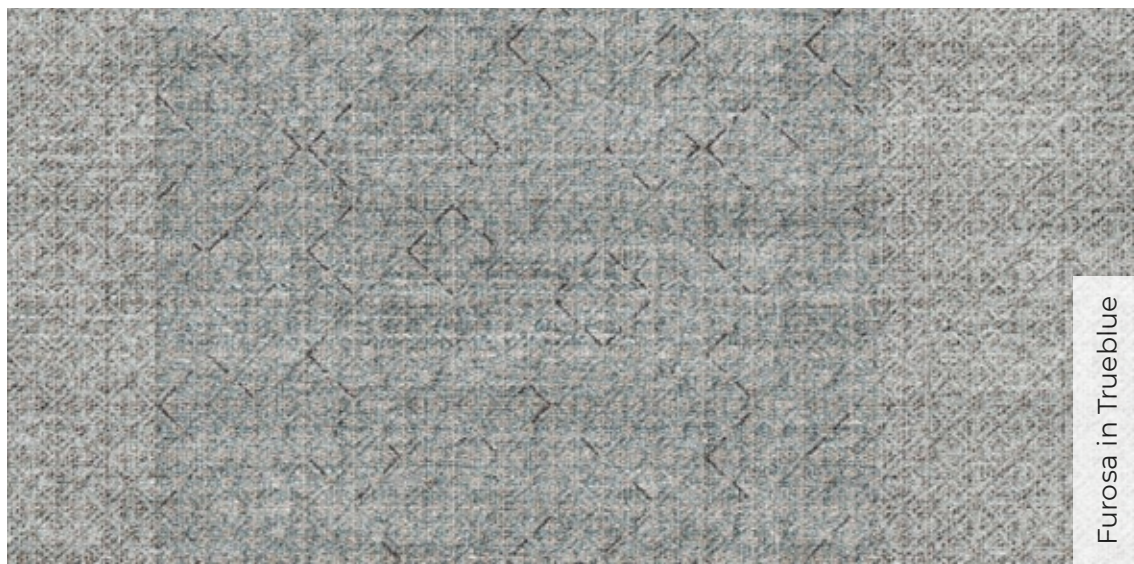
Furosa in Chestnut



Frost in Mamba



Furosa in Grape

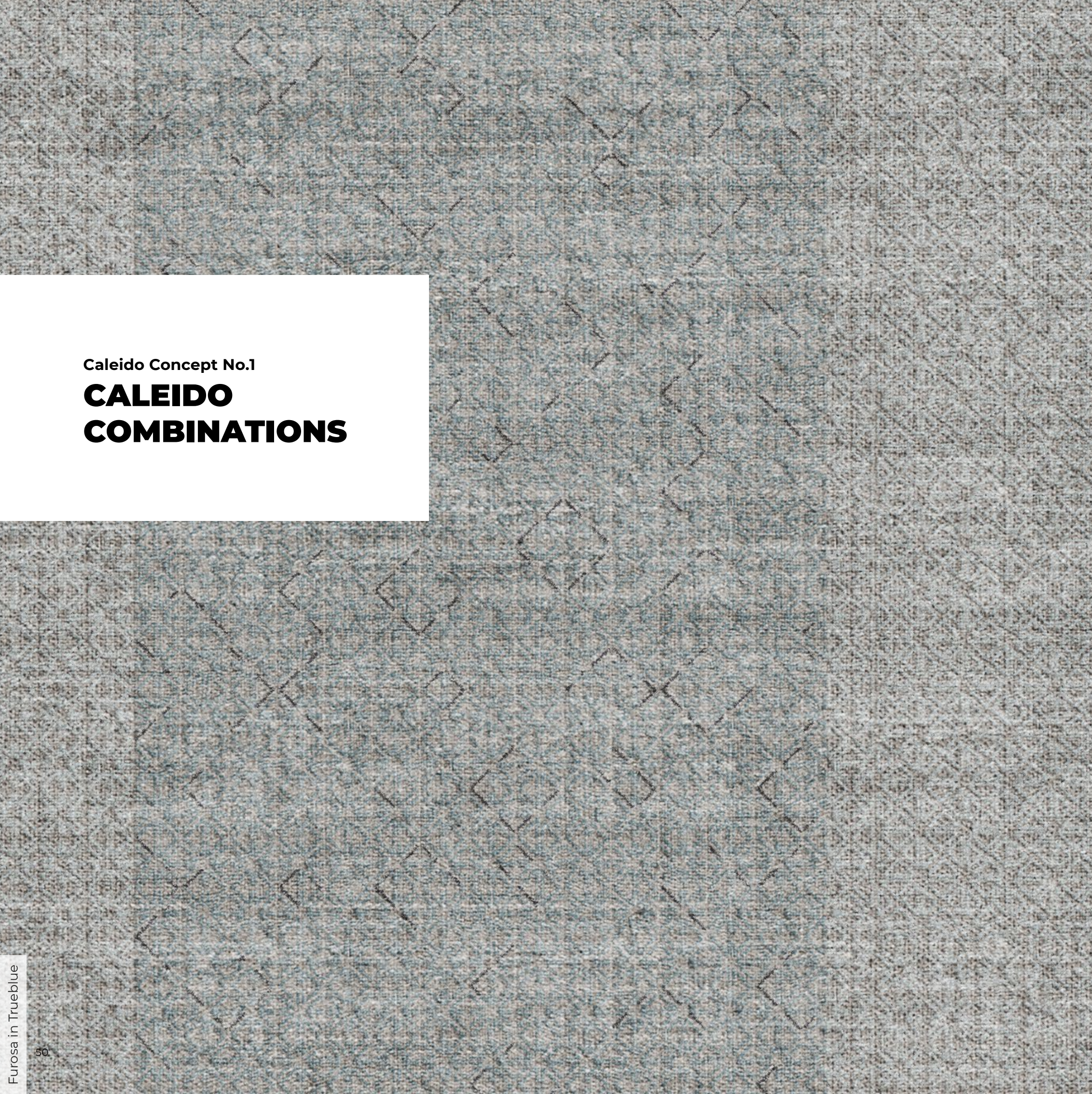


Furosa in Trueblue



Caleido Concept No.1

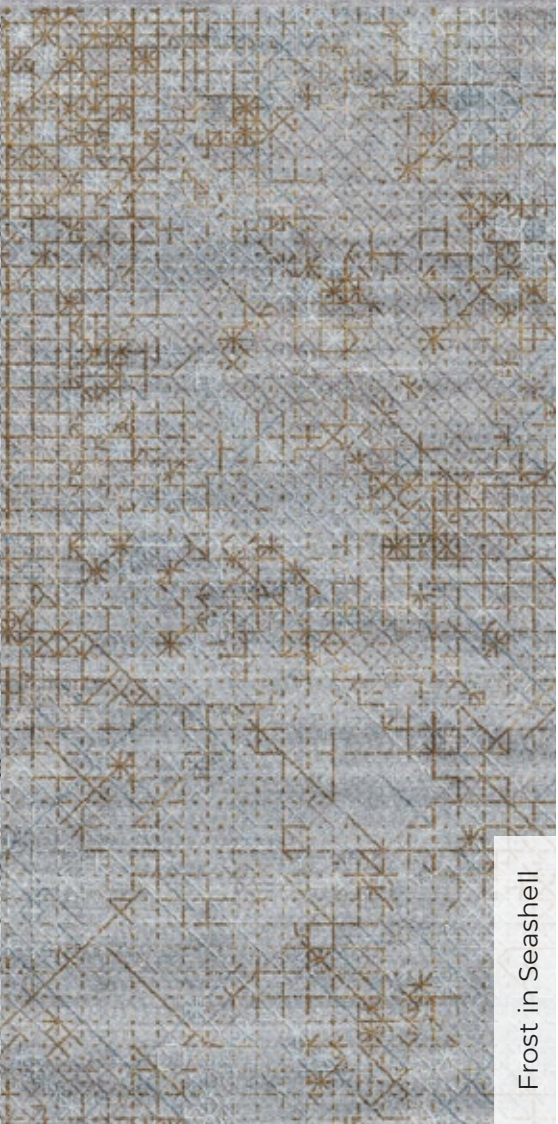
CALEIDO  
COMBINATIONS



Frost in Raincloud



Fracto in Tiffany



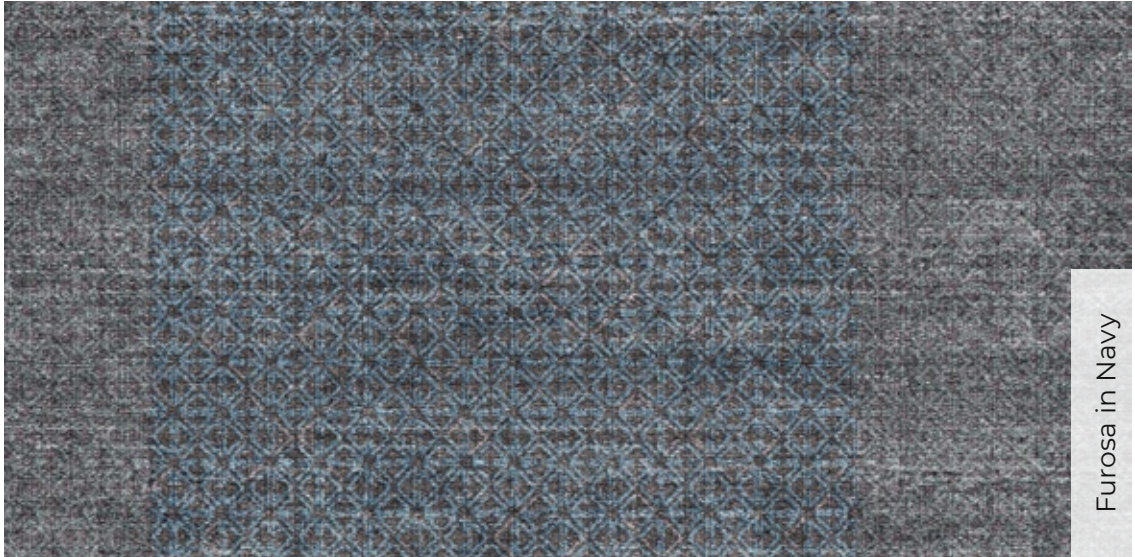
Frost in Seashell



Fracto in Cactus



Fracto in Chalk



Furosa in Navy



Furosa in Venice



Frost in Bermuda





Caleido Concept No.1

DESIGN INDEX

MODELS

Fracto in Adobe	12,24,25,47
Fracto in Autumn	12,14,15,47
Fracto in Cactus	12,24,26,51
Fracto in Chalk	12,14,16,49,51
Fracto in Ink	12,34,35,48
Fracto in Rust	12,34,36,47
Fracto in Sandstone	12,34,37,47
Fracto in Tiffany	12,24,27,51
Fracto in Yogurt	12,14,17
Frost in Bermuda	12,14,18,49,51
Frost in Emerald	12,34,38,47
Frost in Jazzberry	13,34,39,46
Frost in Mamba	13,34,40,49
Frost in Oysterbay	12,24,28

Frost in Raincloud	13,14,19,51
Frost in Seashell	13,24,29,51
Frost in Truffle	13,24,30
Frost in Vanilla	13,14,20,47
Furosa in Capri	13,24,31,47
Furosa in Chestnut	13,14,21,49
Furosa in Grape	13,34,41,49
Furosa in Navy	13,24,32,51
Furosa in Starburst	13,24,33,47
Furosa in Teal	13,34,42
Furosa in Thunder	13,34,43,49
Furosa in Trueblue	13,14,22,49,50
Furosa in Venice	13,14,23,49,51

PATTERNS

Fracto	9
Frost	9
Furosa	9

TONES

Light	12,13,14
Midium	12,13,24
Dark	12,13,34

WEAVING TECHNIQUES

Tango	5
Ibiza	5
Gamla	5





B A T T I L O S S I

*est. 1959*

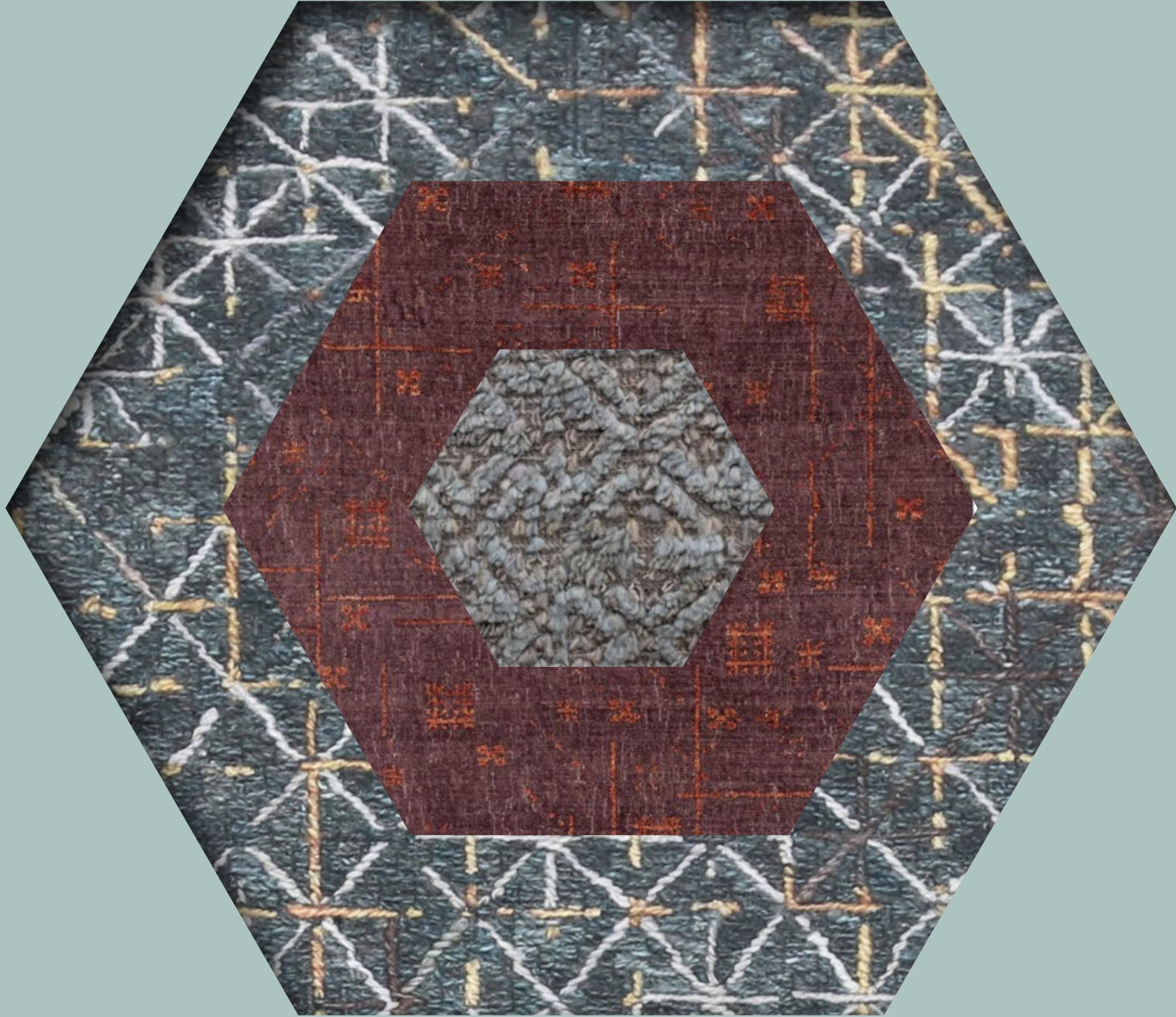
**HEADQUARTER & SHOWROOM**

Galleria Battilossi Srl u.s.  
Via Giolitti 45/g - 10123 Turin | Italy  
Phone: (+39) 011 18951830  
[www.battilossi.com](http://www.battilossi.com) | [info@battilossi.com](mailto:info@battilossi.com)

Copyright ©: Galleria Battilossi 2021



[www.battilossi.com](http://www.battilossi.com)



COMPLEX SIMPLICITY — ULTIMATE SOPHISTICATION